

# Switch on **Inspiration**

A Blend Of Smartness, Comfort & Style



Our Pricelist is now  
**Available Online**  
Scan & download

PRICELIST: **APRIL 2026**



### SLIM & SLEEK DESIGN

The special slim & sleek design of the new ROMA range is crafted for the modern generation who want their space to be more than just a space. The unique curve design of the cover plate gives these switches a smooth finish. The curved look makes the space classier and more glamorous.



### SUPER GLOSSY FINISH

The super glossy finish gives these switches the ultimate premium look. They effortlessly complement the interior decoration of a space. Plus, the design also ensures that dust does not settle easily.

# SWITCH TO THE WORLD OF GLAMOUR.



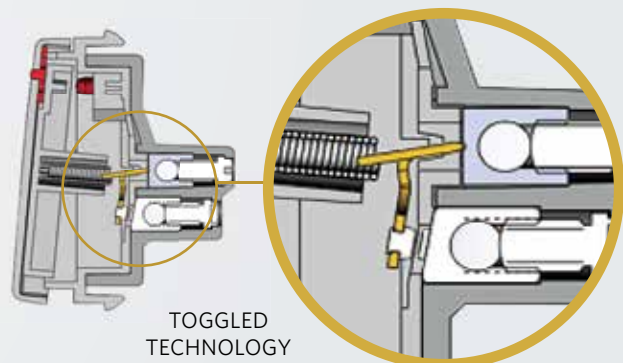
## EXTRA SAFETY

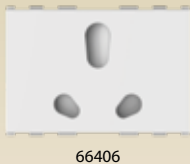
Urea back and front PC of VO grade material used provides extra safety. It has flame retardant properties, which makes the switches safer with a longer lifespan. It also has higher heat resistance properties as compared to PC of other grades and thermoplastics. In addition to this, the moulding of the switches is not easy. The technology used in developing the special designs and shapes involves high cost and hi tech infrastructure, which makes the duplicity of the product very difficult.



## TOGGLED TECHNOLOGY

The all new range of ROMA is not only pleasing to the eyes but also to the ears. Toggle type mechanism is an advanced switch operation technique which provides soft sound. It makes the switches easy to operate and also increases the lifespan of the switch.





Item	Description	HSN	Unit Sale Price Rs per number	Standard Packing Quantity (Number)	Maximum Retail Price (Inclusive of all taxes) Rs.
<b>SWITCHES, 10AX (ISI)</b>					
66101	10AX, 1Way Switch, 1 Module 100W SBL Load	85361010	160	20	3200
66111	10AX, 1Way Switch with Indicator, 1 Module 100W SBL Load	85361010	242	20	4840
66102	10AX, 2Way Switch, 1 Module 100W SBL Load	85361010	243	20	4860
66201	10AX, 1Way Switch, 2 Module 100W SBL Load	85361010	251	10	2510
66211	10AX, 1Way Switch with Indicator, 2 Module 100W SBL Load	85361010	284	10	2840
66202	10AX, 2Way Switch, 2 Module 100W SBL Load	85361010	284	10	2840
<b>BELL PUSH (ISI)</b>					
66103	10A, Bell Push Switch, 1 Module	85361010	243	20	4860
66133	10A, Bell Push Switch with Indicator, 1 Module	85361010	266	20	5320
66203	10A, Bell Push Switch, 2 Module	85361010	284	10	2840
66233	10A, Bell Push Switch with Indicator, 2 Module	85361010	311	10	3110
66333	10A, Bell Push Switch with Indicator, 3 Module	85361010	352	5	1760
<b>SWITCHES, 20A (ISI)</b>					
66104	20A, 1Way Switch, 1 Module 250W SBL Load	85361020	272	20	5440
66144	20A, 1Way Switch with Indicator, 1 Module 250W SBL Load	85361020	329	20	6580
66105	20A, 2Way Switch, 1 Module 250W SBL Load	85361020	304	20	6080
66204	20A, 1Way Switch, 2 Module 250W SBL Load	85361020	341	10	3410
66244	20A, 1Way Switch with Indicator, 2 Module 250W SBL Load	85361020	376	10	3760
66205	20A, 2Way Switch, 2 Module 250W SBL Load	85361020	365	10	3650
<b>POWER SWITCHES (ISI)</b>					
66325	25A, S.P, 1Way Switch with Indicator, 1 Module	85361020	400	10	4000
66332	32A, D.P, 1Way Switch with Indicator, 2 Module	85361020	510	10	5100
<b>MOTOR STARTER SWITCHES</b>					
66025	25A, Motor Starter Switch, 2 Module	85369010	760	10	7600
<b>SOCKETS WITH SAFETY SHUTTER</b>					
66402	6A, 3Pin Round Socket, 2 Module, ISI	85366910	248	10	2480
66404	16A, 3Pin Round Socket, 2 Module, ISI	85366910	411	10	4110
66455	6A/16A, Twin Socket, 2 Module, ISI	85366910	504	10	5040
66406	6A/16A, Twin Socket, 3 Module, ISI	85366910	512	5	2560

16A,20A,25A Switch not suggested for geyser load. Instead MCB/Motor Stater must be used.



Item	Description	HSN	Unit Sale Price Rs per number	Standard Packing Quantity (Number)	Maximum Retail Price (Inclusive of all taxes) Rs.
<b>FAN REGULATORS &amp; DIMMERS</b>					
66501	100W, Step Fan Regulator, 1 Module	84149030	<b>785</b>	20	15700
66502**	100W, Step Fan Regulator, 2 Module	84149030	<b>1052</b>	10	10520
66503	100W, Step Fan Regulator, 2 Module (ISI)	84149030	<b>1070</b>	10	10700
66504	100W, Step Fan Regulator (For High Speed Fans)	84149030	<b>1052</b>	10	10520
66508	100W, 7 Step Fan Regulator, 2 Module	85365090	<b>1052</b>	10	10520
66505	450W, Dimmer, 1 Module (Incandescent Lamp)	85365020	<b>724</b>	20	14480
66506	650W, Dimmer, 2 Module (Incandescent Lamp)	85365020	<b>986</b>	10	9860
66507	150W, Dimmer for LED 2 Module	85365090	<b>2306</b>	10	23060
**Compatible with selected BLDC Fan models only					
<b>SUPPORT MODULES</b>					
66551	RJ11, Tel Jack, Single with Shutter, 1 Module	85366910	<b>255</b>	20	5100
66555	RJ45, Receptor With Shutter, 1 Module	85366910	<b>256</b>	20	5120
66556	RJ45, Computer Socket, Cat 5e, 1 Module	85366910	<b>929</b>	20	18580
66557	RJ45, Computer Socket, Cat 6, 1 Module	85366910	<b>1055</b>	20	21100
66623	RJ45, Computer Socket, Cat 6, 1 Module	85366910	<b>1172</b>	10	11720
66601	Cord Outlet with Grip, 1 Module	85366910	<b>215</b>	20	4300
66602	TV Socket Outlet, 1 Module	85365090	<b>260</b>	20	5200
66603	Buzzer,Dura, 2 Module	85318000	<b>320</b>	10	3200
66604	Blank Plate, 1 Module	85389000	<b>64</b>	40	2560
66644	Blank Plate, 2 Module	85389000	<b>101</b>	20	2020
66606	6A, Overload Protection - Manual Resettable Fuse, 1 Module	85361010	<b>324</b>	20	6480
66616	16A, Overload Protection - Manual Resettable Fuse, 1 Module	85361020	<b>324</b>	20	6480
66605R	Indicator - LED (Red), 1 Module	85395000	<b>303</b>	20	6060
66605N	Indicator - LED (Natural), 1 Module	85395000	<b>303</b>	20	6060
66605G	Indicator - LED (Green), 1 Module	85395000	<b>303</b>	20	6060
66608	Satellite Socket	85365090	<b>452</b>	10	4520
66712	Audio Video Socket, 1 Module	85366910	<b>810</b>	10	8100
66609	Bluetooth Speaker, 2 Module	85182900	<b>4408</b>	6	26448
66711	High-Definition Multimedia Interface, 1 Module	85444999	<b>1824</b>	10	18240
66716	Projector Socket, 1 Module	85444999	<b>2795</b>	10	27950
66715	USB-A Charger, Single Port(2.1A, 5V DC), 1 Module (CRS Certified)	85044090	<b>1916</b>	20	38320
66717	18W, USB Power Delivery Charger(USB-C), 1 Module	85365090	<b>2243</b>	20	44860
66718	18W, USB Type-A Fast Charger, 1 Module	85044090	<b>2138</b>	20	42760
<b>HOSPITALITY RANGE</b>					
66701	20A, Electronic Keycard Unit with 30 Sec time delay, 3 Module	85365090	<b>3624</b>	6	21744
66702	DND MMR Internal unit ( DND Switch, MMR Switch), 2 Module	85365090	<b>961</b>	5	4805
66703	DND MMR External unit ( DND Indicator, MMR Indicator & Bell Push Switch), 2 Module	85365090	<b>1283</b>	5	6415
66704	20VA, Shaver Socket with Transformer (With 4 Module Curve Plate ), White	85365090	<b>4265</b>	1	4265
66705	Bell Call Indicator, 1 Module	85318000	<b>602</b>	20	12040
66706	Foot Light,Led Based(Cool Day Light),3 Module	94054090	<b>937</b>	6	5622
66766	Foot Light,Led Based(Warm White Light),3 Module	94054090	<b>937</b>	6	5622
66607	Emergency LED Light Unit	94056010	<b>1487</b>	6	8922
66778	Foot Light, Led Based (Cool Day Light), 4 Module	94054090	<b>1016</b>	6	6096
66779	Foot Light, Led Based (Warm White Light),4 Module	94054090	<b>1016</b>	6	6096
66707	Foot Light with PIR ( Cool Day Light ) , 2 Module	94054090	<b>7355</b>	6	44130
66777	Foot Light with PIR ( Warm White ) , 2 Module	94054090	<b>7355</b>	6	44130
66708	PIR Sensor, 2 Module	90318000	<b>6392</b>	6	38352
**Compatible with selected BLDC Fan models only					



66101B 66111B 66102B



66201B 66211B 66202B



66103B 66133B 66203B 66233B 66333B



66104B 66144B 66105B



66204B 66244B 66205B



66325B 66332B 66025B



66402B 66404B 66455B



66406B

Item	Description	HSN	Unit Sale Price Rs per number	Standard Packing Quantity (Number)	Maximum Retail Price (Inclusive of all taxes) Rs.
<b>SWITCHES, 10AX (ISI)</b>					
66101B	10AX, 1Way Switch, 1 Module 100W SBL Load	85361010	<b>168</b>	20	3360
66111B	10AX, 1Way Switch with Indicator, 1 Module 100W SBL Load	85361010	<b>263</b>	20	5260
66102B	10AX, 2Way Switch, 1 Module 100W SBL Load	85361010	<b>255</b>	20	5100
66201B	10AX, 1Way Switch, 2 Module 100W SBL Load	85361010	<b>267</b>	10	2670
66211B	10AX, 1Way Switch with Indicator, 2 Module 100W SBL Load	85361010	<b>306</b>	10	3060
66202B	10AX, 2Way Switch, 2 Module 100W SBL Load	85361010	<b>306</b>	10	3060
<b>BELL PUSH (ISI)</b>					
66103B	10A, Bell Push Switch, 1 Module	85361010	<b>264</b>	20	5280
66133B	10A, Bell Push Switch with Indicator, 1 Module	85361010	<b>284</b>	20	5680
66203B	10A, Bell Push Switch, 2 Module	85361010	<b>306</b>	10	3060
66233B	10A, Bell Push Switch with Indicator, 2 Module	85361010	<b>331</b>	10	3310
66333B	10A, Bell Push Switch with Indicator, 3 Module	85361010	<b>379</b>	5	1895
<b>SWITCHES, 20A (ISI)</b>					
66104B	20A, 1Way Switch, 1 Module 250W SBL Load	85361020	<b>291</b>	20	5820
66144B	20A, 1Way Switch with Indicator, 1 Module 250W SBL Load	85361020	<b>353</b>	20	7060
66105B	20A, 2Way Switch, 1 Module 250W SBL Load	85361020	<b>324</b>	20	6480
66204B	20A, 1Way Switch, 2 Module 250W SBL Load	85361020	<b>365</b>	10	3650
66244B	20A, 1Way Switch with Indicator, 2 Module 250W SBL Load	85361020	<b>405</b>	10	4050
66205B	20A, 2Way Switch, 2 Module 250W SBL Load	85361020	<b>391</b>	10	3910
<b>POWER SWITCHES (ISI)</b>					
66325B	25A, S.P, 1Way Switch with Indicator, 1 Module	85361020	<b>426</b>	10	4260
66332B	32A, D.P, 1Way Switch with Indicator, 2 Module	85361020	<b>542</b>	10	5420
<b>MOTOR STARTER SWITCHES</b>					
66025B	25A, Motor Starter Switch, 2 Module	85369010	<b>801</b>	10	8010
<b>SOCKETS WITH SAFETY SHUTTER (ISI)</b>					
66402B	6A, 3Pin Round Socket, 2 Module, ISI	85366910	<b>262</b>	10	2620
66404B	16A, 3Pin Round Socket, 2 Module, ISI	85366910	<b>434</b>	10	4340
66455B	6A/16A, Twin Socket, 2 Module, ISI	85366910	<b>538</b>	10	5380
66406B	6A/16A, Twin Socket, 3 Module, ISI	85366910	<b>547</b>	5	2735

16A,20A,25A Switch not suggested for geyser load. Instead MCB/Motor Stater must be used.



Item	Description	HSN	Unit Sale Price Rs per number	Standard Packing Quantity (Number)	Maximum Retail Price (Inclusive of all taxes) Rs.
<b>FAN REGULATORS &amp; DIMMERS</b>					
66501B	100W, Step Fan Regulator, 1 Module	84149030	<b>838</b>	20	16760
66502B**	100W, Step Fan Regulator, 2 Module	84149030	<b>1123</b>	10	11230
66503B	100W, Step Fan Regulator, 2 Module (ISI)	84149030	<b>1140</b>	10	11400
66504B	100W, Step Fan Regulator (For High Speed Fans)	84149030	<b>1123</b>	10	11230
66508B	100W, 7 Step Fan Regulator, 2 Module	85365090	<b>1123</b>	10	11230
66505B	450W, Dimmer, 1 Module (Incandescent Lamp)	85365020	<b>779</b>	20	15580
66506B	650W, Dimmer, 2 Module (Incandescent Lamp)	85365020	<b>1051</b>	10	10510
66507B	150W, Dimmer for LED 2 Module	85365090	<b>2470</b>	10	24700
**Compatible with selected BLDC Fan models only					
<b>SUPPORT MODULES</b>					
66551B	RJ11, Tel Jack, Single with Shutter, 1 Module	85366910	<b>268</b>	20	5360
66555B	RJ45, Receptor With Shutter, 1 Module	85366910	<b>274</b>	20	5480
66556B	RJ45, Computer Socket, Cat 5e, 1 Module	85366910	<b>991</b>	20	19820
66557B	RJ45, Computer Socket, Cat 6, 1 Module	85366910	<b>1132</b>	20	22640
66623B	RJ45, Computer Socket, Cat 6, 1 Module	85366910	<b>1337</b>	10	13370
66601B	Cord Outlet with Grip, 1 Module	85366910	<b>227</b>	20	4540
66602B	TV Socket Outlet, 1 Module	85365090	<b>272</b>	20	5440
66603B	Buzzer,Dura, 2 Module	85318000	<b>345</b>	10	3450
66604B	Blank Plate, 1 Module	85389000	<b>66</b>	40	2640
66644B	Blank Plate, 2 Module	85389000	<b>113</b>	20	2260
66606B	6A, Overload Protection - Manual Resettable Fuse, 1 Module	85361010	<b>348</b>	20	6960
66616B	16A, Overload Protection - Manual Resettable Fuse, 1 Module	85361020	<b>348</b>	20	6960
66605R	Indicator - LED (Red), 1 Module	85395000	<b>303</b>	20	6060
66605N	Indicator - LED (Natural), 1 Module	85395000	<b>303</b>	20	6060
66605G	Indicator - LED (Green), 1 Module	85395000	<b>303</b>	20	6060
66608B	Satellite Socket	85365090	<b>519</b>	10	5190
66712B	Audio Video Socket, 1 Module	85366910	<b>870</b>	10	8700
66609B	Bluetooth Speaker, 2 Module	85182900	<b>4714</b>	6	28284
66711B	High-Definition Multimedia Interface, 1 Module	85444999	<b>2716</b>	10	27160
66716B	Projector Socket, 1 Module	85444999	<b>2988</b>	10	29880
66715B	USB-A Charger, Single Port(2.1A, 5V DC), 1 Module (CRS Certified)	85044090	<b>2053</b>	20	41060
66717B	18W, USB Power Delivery Charger(USB-C), 1 Module	85365090	<b>2399</b>	20	47980
66718B	18W, USB Type-A Fast Charger, 1 Module	85044090	<b>2284</b>	20	45680
<b>HOSPITALITY RANGE</b>					
66701B	20A, Electronic Keycard Unit with 30 Sec time delay, 3 Module	85365090	<b>3875</b>	6	23250
66702B	DND MMR Internal unit ( DND Switch, MMR Switch), 2 Module	85365090	<b>1023</b>	5	5115
66703B	DND MMR External unit ( DND Indicator, MMR Indicator & Bell Push Switch), 2 Module	85365090	<b>1371</b>	5	6855
66704B	20VA, Shaver Socket with Transformer (With 4 Module Curve Plate ), White	85365090	<b>4560</b>	1	4560
66705B	Bell Call Indicator, 1 Module	85318000	<b>644</b>	20	12880
66706B	Foot Light,Led Based(Cool Day Light),3 Module	94054090	<b>1007</b>	6	6042
66766B	Foot Light,Led Based(Warm White Light),3 Module	94054090	<b>1007</b>	6	6042
66607B	Emergency LED Light Unit	94056010	<b>1596</b>	6	9576
66778B	Foot Light, Led Based (Cool Day Light), 4 Module	94054090	<b>1093</b>	6	6558
66779B	Foot Light, Led Based (Warm White Light),4 Module	94054090	<b>1093</b>	6	6558
66707B	Foot Light with PIR ( Cool Day Light ) , 2 Module	94054090	<b>7977</b>	6	47862
66777B	Foot Light with PIR ( Warm White ) , 2 Module	94054090	<b>7977</b>	6	47862
66708B	PIR Sensor, 2 Module	90318000	<b>6946</b>	6	41676

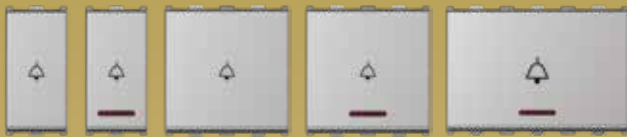
\*\*Compatible with selected BLDC Fan models only



66101S 66111S 66102S



66201S 66211S 66202S



66103S 66133S 66203S 66233S 66333S



66104S 66144S 66105S



66204S 66244S 66205S



66325S 66332S 66025S



66402S 66404S 66455S



66406S

Item	Description	HSN	Unit Sale Price Rs per number	Standard Packing Quantity (Number)	Maximum Retail Price (Inclusive of all taxes) Rs.
<b>SWITCHES, 10AX (ISI)</b>					
66101S	10AX, 1Way Switch, 1 Module 100W SBL Load	85361010	<b>168</b>	20	3360
66111S	10AX, 1Way Switch with Indicator, 1 Module 100W SBL Load	85361010	<b>263</b>	20	5260
66102S	10AX, 2Way Switch, 1 Module 100W SBL Load	85361010	<b>255</b>	20	5100
66201S	10AX, 1Way Switch, 2 Module 100W SBL Load	85361010	<b>267</b>	10	2670
66211S	10AX, 1Way Switch with Indicator, 2 Module 100W SBL Load	85361010	<b>306</b>	10	3060
66202S	10AX, 2Way Switch, 2 Module 100W SBL Load	85361010	<b>306</b>	10	3060
<b>BELL PUSH (ISI)</b>					
66103S	10A, Bell Push Switch, 1 Module	85361010	<b>264</b>	20	5280
66133S	10A, Bell Push Switch with Indicator, 1 Module	85361010	<b>284</b>	20	5680
66203S	10A, Bell Push Switch, 2 Module	85361010	<b>306</b>	10	3060
66233S	10A, Bell Push Switch with Indicator, 2 Module	85361010	<b>331</b>	10	3310
66333S	10A, Bell Push Switch with Indicator, 3 Module	85361010	<b>379</b>	5	1895
<b>SWITCHES, 20A (ISI)</b>					
66104S	20A, 1Way Switch, 1 Module 250W SBL Load	85361020	<b>291</b>	20	5820
66144S	20A, 1Way Switch with Indicator, 1 Module 250W SBL Load	85361020	<b>353</b>	20	7060
66105S	20A, 2Way Switch, 1 Module 250W SBL Load	85361020	<b>324</b>	20	6480
66204S	20A, 1Way Switch, 2 Module 250W SBL Load	85361020	<b>365</b>	10	3650
66244S	20A, 1Way Switch with Indicator, 2 Module 250W SBL Load	85361020	<b>405</b>	10	4050
66205S	20A, 2Way Switch, 2 Module 250W SBL Load	85361020	<b>391</b>	10	3910
<b>POWER SWITCHES (ISI)</b>					
66325S	25A, S.P, 1Way Switch with Indicator, 1 Module	85361020	<b>426</b>	10	4260
66332S	32A, D.P, 1Way Switch with Indicator, 2 Module	85361020	<b>542</b>	10	5420
<b>MOTOR STARTER SWITCHES</b>					
66025S	25A, Motor Starter Switch, 2 Module	85369010	<b>801</b>	10	8010
<b>SOCKETS WITH SAFETY SHUTTER (ISI)</b>					
66402S	6A, 3Pin Round Socket, 2 Module, ISI	85366910	<b>262</b>	10	2620
66404S	16A, 3Pin Round Socket, 2 Module, ISI	85366910	<b>434</b>	10	4340
66455S	6A/16A, Twin Socket, 2 Module, ISI	85366910	<b>538</b>	10	5380
66406S	6A/16A, Twin Socket, 3 Module, ISI	85366910	<b>547</b>	5	2735



Item	Description	HSN	Unit Sale Price Rs per number	Standard Packing Quantity (Number)	Maximum Retail Price (Inclusive of all taxes) Rs.
<b>FAN REGULATORS &amp; DIMMERS</b>					
66501S	100W, Step Fan Regulator, 1 Module	84149030	<b>838</b>	20	16760
66502S**	100W, Step Fan Regulator, 2 Module	84149030	<b>1123</b>	10	11230
66503S	100W, Step Fan Regulator, 2 Module (ISI)	84149030	<b>1140</b>	10	11400
66504S	100W, Step Fan Regulator (For High Speed Fans)	84149030	<b>1123</b>	10	11230
66508S	100W, 7 Step Fan Regulator, 2 Module	85365090	<b>1123</b>	10	11230
66505S	450W, Dimmer, 1 Module (Incandescent Lamp)	85365020	<b>779</b>	20	15580
66506S	650W, Dimmer, 2 Module (Incandescent Lamp)	85365020	<b>1051</b>	10	10510
66507S	150W, Dimmer for LED 2 Module	85365090	<b>2470</b>	10	24700
**Compatible with selected BLDC Fan models only					
<b>SUPPORT MODULES</b>					
66551S	RJ11, Tel Jack, Single with Shutter, 1 Module	85366910	<b>268</b>	20	5360
66555S	RJ45, Receptor With Shutter, 1 Module	85366910	<b>274</b>	20	5480
66556S	RJ45, Computer Socket, Cat 5e, 1 Module	85366910	<b>991</b>	20	19820
66557S	RJ45, Computer Socket, Cat 6, 1 Module	85366910	<b>1132</b>	20	22640
66623S	RJ45, Computer Socket, Cat 6, 1 Module	85366910	<b>1337</b>	10	13370
66601S	Cord Outlet with Grip, 1 Module	85366910	<b>227</b>	20	4540
66602S	TV Socket Outlet, 1 Module	85365090	<b>272</b>	20	5440
66603S	Buzzer,Dura, 2 Module	85318000	<b>345</b>	10	3450
66604S	Blank Plate, 1 Module	85389000	<b>66</b>	40	2640
66644S	Blank Plate, 2 Module	85389000	<b>113</b>	20	2260
66606S	6A, Overload Protection - Manual Resettable Fuse, 1 Module	85361010	<b>348</b>	20	6960
66616S	16A, Overload Protection - Manual Resettable Fuse, 1 Module	85361020	<b>348</b>	20	6960
66605R	Indicator - LED (Red), 1 Module	85395000	<b>303</b>	20	6060
66605N	Indicator - LED (Natural), 1 Module	85395000	<b>303</b>	20	6060
66605G	Indicator - LED (Green), 1 Module	85395000	<b>303</b>	20	6060
66608S	Satellite Socket	85365090	<b>519</b>	10	5190
66712S	Audio Video Socket, 1 Module	85366910	<b>870</b>	10	8700
66609S	Bluetooth Speaker, 2 Module	85182900	<b>4714</b>	6	28284
66711S	High-Definition Multimedia Interface, 1 Module	85444999	<b>2716</b>	10	27160
66716S	Projector Socket, 1 Module	85444999	<b>2988</b>	10	29880
66715S	USB-A Charger, Single Port(2.1A, 5V DC), 1 Module (CRS Certified)	85044090	<b>2053</b>	20	41060
66717S	18W, USB Power Delivery Charger(USB-C), 1 Module	85365090	<b>2399</b>	20	47980
66718S	18W, USB Type-A Fast Charger, 1 Module	85044090	<b>2284</b>	20	45680
<b>HOSPITALITY RANGE</b>					
66701S	20A, Electronic Keycard Unit with 30 Sec time delay, 3 Module	85365090	<b>3875</b>	6	23250
66702S	DND MMR Internal unit ( DND Switch, MMR Switch), 2 Module	85365090	<b>1023</b>	5	5115
66703S	DND MMR External unit ( DND Indicator, MMR Indicator & Bell Push Switch), 2 Module	85365090	<b>1371</b>	5	6855
66704S	20VA, Shaver Socket with Transformer (With 4 Module Curve Plate ), White	85365090	<b>4560</b>	1	4560
66705S	Bell Call Indicator, 1 Module	85318000	<b>644</b>	20	12880
66706S	Foot Light,Led Based(Cool Day Light),3 Module	94054090	<b>1007</b>	6	6042
66766S	Foot Light,Led Based(Warm White Light),3 Module	94054090	<b>1007</b>	6	6042
66607S	Emergency LED Light Unit	94056010	<b>1596</b>	6	9576
66778S	Foot Light, Led Based (Cool Day Light), 4 Module	94054090	<b>1093</b>	6	6558
66779S	Foot Light, Led Based (Warm White Light),4 Module	94054090	<b>1093</b>	6	6558
66707S	Foot Light with PIR ( Cool Day Light ) , 2 Module	94054090	<b>7977</b>	6	47862
66777S	Foot Light with PIR ( Warm White ) , 2 Module	94054090	<b>7977</b>	6	47862
66708S	PIR Sensor, 2 Module	90318000	<b>6946</b>	6	41676
**Compatible with selected BLDC Fan models only					



66101GB 66111GB 66102GB



66201GB 66211GB 66202GB



66103GB 66133GB 66203GB 66233GB 66333GB



66104GB 66144GB 66105GB



66204GB 66244GB 66205GB



66325GB 66332GB 66025GB



66402GB 66404GB 66455GB



66406GB

**SWITCHES, 10AX (ISI)**

Item	Description	HSN	Unit Sale Price Rs per number	Standard Packing Quantity (Number)	Maximum Retail Price (Inclusive of all taxes) Rs.
66101GB	10AX, 1Way Switch, 1 Module 100W SBL Load	85361010	168	20	3360
66111GB	10AX, 1Way Switch with Indicator, 1 Module 100W SBL Load	85361010	263	20	5260
66102GB	10AX, 2Way Switch, 1 Module 100W SBL Load	85361010	255	20	5100
66201GB	10AX, 1Way Switch, 2 Module 100W SBL Load	85361010	267	10	2670
66211GB	10AX, 1Way Switch with Indicator, 2 Module 100W SBL Load	85361010	306	10	3060
66202GB	10AX, 2Way Switch, 2 Module 100W SBL Load	85361010	306	10	3060

**BELL PUSH (ISI)**

66103GB	10A, Bell Push Switch, 1 Module	85361010	264	20	5280
66133GB	10A, Bell Push Switch with Indicator, 1 Module	85361010	284	20	5680
66203GB	10A, Bell Push Switch, 2 Module	85361010	306	10	3060
66233GB	10A, Bell Push Switch with Indicator, 2 Module	85361010	331	10	3310
66333GB	10A, Bell Push Switch with Indicator, 3 Module	85361010	379	5	1895

**SWITCHES, 20A (ISI)**

66104GB	20A, 1Way Switch, 1 Module 250W SBL Load	85361020	291	20	5820
66144GB	20A, 1Way Switch with Indicator, 1 Module 250W SBL Load	85361020	353	20	7060
66105GB	20A, 2Way Switch, 1 Module 250W SBL Load	85361020	324	20	6480
66204GB	20A, 1Way Switch, 2 Module 250W SBL Load	85361020	365	10	3650
66244GB	20A, 1Way Switch with Indicator, 2 Module 250W SBL Load	85361020	405	10	4050
66205GB	20A, 2Way Switch, 2 Module 250W SBL Load	85361020	391	10	3910

**POWER SWITCHES (ISI)**

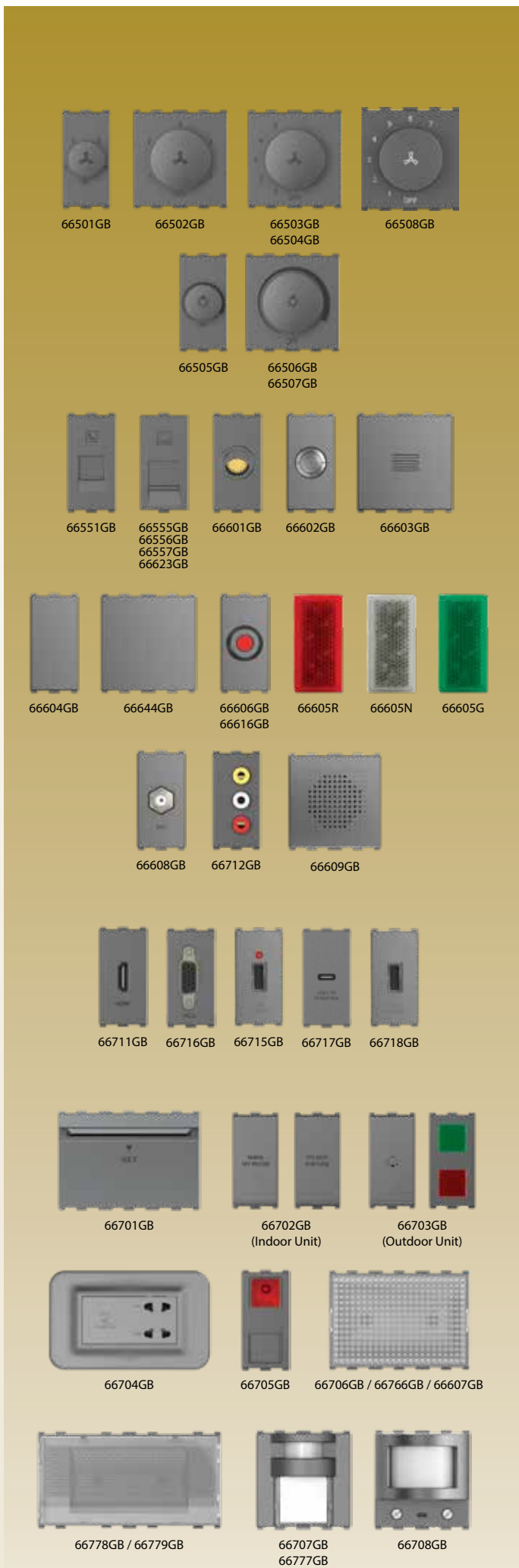
66325GB	25A, S.P, 1Way Switch with Indicator, 1 Module	85361020	426	10	4260
66332GB	32A, D.P, 1Way Switch with Indicator, 2 Module	85361020	542	10	5420

**MOTOR STARTER SWITCHES**

66025GB	25A, Motor Starter Switch, 2 Module	85369010	801	10	8010
---------	-------------------------------------	----------	-----	----	------

**SOCKETS WITH SAFETY SHUTTER (ISI)**

66402GB	6A, 3Pin Round Socket, 2 Module, ISI	85366910	262	10	2620
66404GB	16A, 3Pin Round Socket, 2 Module, ISI	85366910	434	10	4340
66455GB	6A/16A, Twin Socket, 2 Module, ISI	85366910	538	10	5380
66406GB	6A/16A, Twin Socket, 3 Module, ISI	85366910	547	5	2735



Item	Description	HSN	Unit Sale Price Rs per number	Standard Packing Quantity (Number)	Maximum Retail Price (Inclusive of all taxes) Rs.
<b>FAN REGULATORS &amp; DIMMERS</b>					
66501GB	100W, Step Fan Regulator, 1 Module	84149030	<b>838</b>	20	16760
66502GB**	100W, Step Fan Regulator, 2 Module	84149030	<b>1123</b>	10	11230
66503GB	100W, Step Fan Regulator, 2 Module (ISI)	84149030	<b>1140</b>	10	11400
66504GB	100W, Step Fan Regulator (For High Speed Fans)	84149030	<b>1123</b>	10	11230
66508GB	100W, 7 Step Fan Regulator, 2 Module	85365090	<b>1123</b>	10	11230
66505GB	450W, Dimmer, 1 Module (Incandescent Lamp)	85365020	<b>779</b>	20	15580
66506GB	650W, Dimmer, 2 Module (Incandescent Lamp)	85365020	<b>1051</b>	10	10510
66507GB	150W, Dimmer for LED 2 Module	85365090	<b>2470</b>	10	24700
**Compatible with selected BLDC Fan models only					
<b>SUPPORT MODULES</b>					
66551GB	RJ11, Tel Jack, Single with Shutter, 1 Module	85366910	<b>268</b>	20	5360
66555GB	RJ45, Receptor With Shutter, 1 Module	85366910	<b>274</b>	20	5480
66556GB	RJ45, Computer Socket, Cat 5e, 1 Module	85366910	<b>991</b>	20	19820
66557GB	RJ45, Computer Socket, Cat 6, 1 Module	85366910	<b>1132</b>	20	22640
66623GB	RJ45, Computer Socket, Cat 6, 1 Module	85366910	<b>1337</b>	10	13370
66601GB	Cord Outlet with Grip, 1 Module	85366910	<b>227</b>	20	4540
66602GB	TV Socket Outlet, 1 Module	85365090	<b>272</b>	20	5440
66603GB	Buzzer,Dura, 2 Module	85318000	<b>345</b>	10	3450
66604GB	Blank Plate, 1 Module	85389000	<b>66</b>	40	2640
66644GB	Blank Plate, 2 Module	85389000	<b>113</b>	20	2260
66606GB	6A, Overload Protection - Manual Resettable Fuse, 1 Module	85361010	<b>348</b>	20	6960
66616GB	16A, Overload Protection - Manual Resettable Fuse, 1 Module	85361020	<b>348</b>	20	6960
66605R	Indicator - LED (Red), 1 Module	85395000	<b>303</b>	20	6060
66605N	Indicator - LED (Natural), 1 Module	85395000	<b>303</b>	20	6060
66605G	Indicator - LED (Green), 1 Module	85395000	<b>303</b>	20	6060
66608GB	Satellite Socket	85365090	<b>519</b>	10	5190
66712GB	Audio Video Socket, 1 Module	85366910	<b>870</b>	10	8700
66609GB	Bluetooth Speaker, 2 Module	85182900	<b>4714</b>	6	28284
66711GB	High-Definition Multimedia Interface, 1 Module	85444999	<b>2716</b>	10	27160
66716GB	Projector Socket, 1 Module	85444999	<b>2988</b>	10	29880
66715GB	USB-A Charger, Single Port(2.1A, 5V DC), 1 Module (CRS Certified)	85044090	<b>2053</b>	20	41060
66717GB	18W, USB Power Delivery Charger(USB-C), 1 Module	85365090	<b>2399</b>	20	47980
66718GB	18W, USB Type-A Fast Charger, 1 Module	85044090	<b>2284</b>	20	45680
<b>HOSPITALITY RANGE</b>					
66701GB	20A, Electronic Keycard Unit with 30 Sec time delay, 3 Module	85365090	<b>3875</b>	6	23250
66702GB	DND MMR Internal unit ( DND Switch, MMR Switch), 2 Module	85365090	<b>1023</b>	5	5115
66703GB	DND MMR External unit ( DND Indicator, MMR Indicator & Bell Push Switch), 2 Module	85365090	<b>1371</b>	5	6855
66704GB	20VA, Shaver Socket with Transformer (With 4 Module Curve Plate ), White	85365090	<b>4560</b>	1	4560
66705GB	Bell Call Indicator, 1 Module	85318000	<b>644</b>	20	12880
66706GB	Foot Light,Led Based(Cool Day Light),3 Module	94054090	<b>1007</b>	6	6042
66766GB	Foot Light,Led Based(Warm White Light),3 Module	94054090	<b>1007</b>	6	6042
66607GB	Emergency LED Light Unit	94056010	<b>1596</b>	6	9576
66778GB	Foot Light, Led Based (Cool Day Light), 4 Module	94054090	<b>1093</b>	6	6558
66779GB	Foot Light, Led Based (Warm White Light),4 Module	94054090	<b>1093</b>	6	6558
66707GB	Foot Light with PIR ( Cool Day Light ) , 2 Module	94054090	<b>7977</b>	6	47862
66777GB	Foot Light with PIR ( Warm White ) , 2 Module	94054090	<b>7977</b>	6	47862
66708GB	PIR Sensor, 2 Module	90318000	<b>6946</b>	6	41676

## COVER PLATE WITH BASE FRAME

(HSN Code - 85381090)



White

# PURE

COLOUR	MODULE	1 Module	2 Module	3 Module	4 Module	6 Module	8 Module Horizontal	8 Module Square	9 Module Horizontal	12 Module	16 Module	18 Module
White Curve Design	CODE	66801WH	66802WH	66803WH	66804WH	66806WH	66808WH	66888WH	66809WH	66812WH	66816WH	66818WH
<b>Unit Sale Price Rs per number</b>		<b>226</b>	<b>226</b>	<b>290</b>	<b>343</b>	<b>470</b>	<b>602</b>	<b>602</b>	<b>744</b>	<b>810</b>	<b>833</b>	<b>866</b>
Maximum Retail Price (Inclusive of all taxes) Rs.		2260	2260	2900	3430	4700	6020	3010	7440	4050	4165	4330
Standards Packing Quantity (Number)		10	10	10	10	10	10	5	10	5	5	5

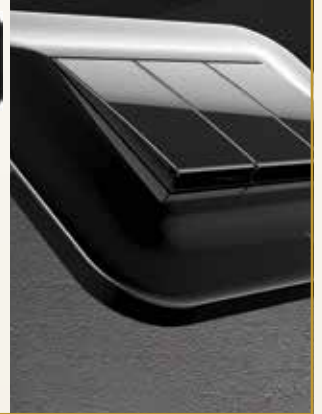
## COVER PLATE WITH BASE FRAME

(HSN Code - 85381090)

# BOLD



Black



COLOUR	MODULE	1 Module	2 Module	3 Module	4 Module	6 Module	8 Module Horizontal	8 Module Square	9 Module Horizontal	12 Module	16 Module	18 Module
Black Curve Design	CODE	66801BL	66802BL	66803BL	66804BL	66806BL	66808BL	66888BL	66809BL	66812BL	66816BL	66818BL
<b>Unit Sale Price Rs per number</b>		<b>246</b>	<b>246</b>	<b>306</b>	<b>356</b>	<b>498</b>	<b>643</b>	<b>643</b>	<b>791</b>	<b>868</b>	<b>890</b>	<b>921</b>
Maximum Retail Price (Inclusive of all taxes) Rs.		2460	2460	3060	3560	4980	6430	3215	7910	4340	4450	4605
Standards Packing Quantity (Number)		10	10	10	10	10	10	5	10	5	5	5

## COVER PLATE WITH BASE FRAME

(HSN Code - 85381090)



Silver

# CLASSY

COLOUR	MODULE	1 Module	2 Module	3 Module	4 Module	6 Module	8 Module Horizontal	8 Module Square	9 Module Horizontal	12 Module	16 Module	18 Module
Silver Curve Design	CODE	66801SL	66802SL	66803SL	66804SL	66806SL	66808SL	66888SL	66809SL	66812SL	66816SL	66818SL
<b>Unit Sale Price Rs per number</b>		<b>246</b>	<b>246</b>	<b>306</b>	<b>356</b>	<b>498</b>	<b>643</b>	<b>643</b>	<b>791</b>	<b>868</b>	<b>890</b>	<b>921</b>
Maximum Retail Price (Inclusive of all taxes) Rs.		2460	2460	3060	3560	4980	6430	3215	7910	4340	4450	4605
Standards Packing Quantity (Number)		10	10	10	10	10	10	5	10	5	5	5

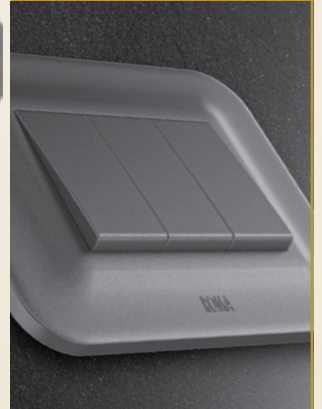
## COVER PLATE WITH BASE FRAME

(HSN Code - 85381090)

# LAUREL



Graphite Black



COLOUR	MODULE	1 Module	2 Module	3 Module	4 Module	6 Module	8 Module Horizontal	8 Module Square	9 Module Horizontal	12 Module	16 Module	18 Module
Graphite Black Curve Design	CODE	66801GB	66802GB	66803GB	66804GB	66806GB	66808GB	66888GB	66809GB	66812GB	66816GB	66818GB
<b>Unit Sale Price Rs per number</b>		<b>246</b>	<b>246</b>	<b>306</b>	<b>356</b>	<b>498</b>	<b>643</b>	<b>643</b>	<b>791</b>	<b>868</b>	<b>890</b>	<b>921</b>
Maximum Retail Price (Inclusive of all taxes) Rs.		2460	2460	3060	3560	4980	6430	3215	7910	4340	4450	4605
Standards Packing Quantity (Number)		10	10	10	10	10	10	5	10	5	5	5

# HUE



## COLOR PLATE WITH COLLAR

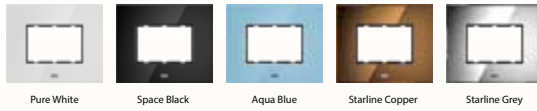
COLOUR	MODULE	1 Module	2 Module	3 Module	4 Module	6 Module	8 Module Horizontal	8 Module Square	9 Module Horizontal	12 Module	16 Module	18 Module
Sea Blue	CODE	66801SBG	66802SBG	66803SBG	66804SBG	66806SBG	66808SBG	66888SBG	66809SBG	66812SBG	66816SBG	66818SBG
Oriental Maroon	CODE	66801OMS	66802OMS	66803OMS	66804OMS	66806OMS	66808OMS	66888OMS	66809OMS	66812OMS	66816OMS	66818OMS
Cooper White	CODE	66801WHC	66802WHC	66803WHC	66804WHC	66806WHC	66808WHC	66888WHC	66809WHC	66812WHC	66816WHC	66818WHC
Lamp Black	CODE	66801LBC	66802LBC	66803LBC	66804LBC	66806LBC	66808LBC	66888LBC	66809LBC	66812LBC	66816LBC	66818LBC
Chrome white	CODE	66801CWH	66802CWH	66803CWH	66804CWH	66806CWH	66808CWH	66888CWH	66809CWH	66812CWH	66816CWH	66818CWH
Gold White	CODE	66801GWH	66802GWH	66803GWH	66804GWH	66806GWH	66808GWH	66888GWH	66809GWH	66812GWH	66816GWH	66818GWH
Gold Black	CODE	66801GBC	66802GBC	66803GBC	66804GBC	66806GBC	66808GBC	66888GBC	66809GBC	66812GBC	66816GBC	66818GBC
<b>Unit Sale Price Rs per number</b>		<b>319</b>	<b>319</b>	<b>405</b>	<b>466</b>	<b>651</b>	<b>826</b>	<b>826</b>	<b>1022</b>	<b>1137</b>	<b>1145</b>	<b>1197</b>
Maximum Retail Price (Inclusive of all taxes) Rs.		1595	1595	2025	2330	3255	4130	4130	5110	5685	5725	5985
Woody	CODE	66801WDB	66802WDB	66803WDB	66804WDB	66806WDB	66808WDB	66888WDB	66809WDB	66812WDB	66816WDB	66818WDB
<b>Unit Sale Price Rs per number</b>		<b>498</b>	<b>498</b>	<b>643</b>	<b>739</b>	<b>1036</b>	<b>1323</b>	<b>1323</b>	<b>1631</b>	<b>1815</b>	<b>1835</b>	<b>1920</b>
Maximum Retail Price (Inclusive of all taxes) Rs.		2490	2490	3215	3695	5180	6615	6615	8155	9075	9175	9600
Standards Packing Quantity (Number)		5	5	5	5	5	5	5	5	5	5	5



## COLOR PLATE WITHOUT CROME COLLAR

COLOUR	MODULE	1 Module	2 Module	3 Module	4 Module	6 Module	8 Module Horizontal	8 Module Square	9 Module Horizontal	12 Module	16 Module	18 Module
Sapphire Blue metallic	CODE	66801SB	66802SB	66803SB	66804SB	66806SB	66808SB	66888SB	66809SB	66812SB	66816SB	66818SB
Azure Blue Metallic	CODE	66801AB	66802AB	66803AB	66804AB	66806AB	66808AB	66888AB	66809AB	66812AB	66816AB	66818AB
Pistachio Green Metallic	CODE	66801PG	66802PG	66803PG	66804PG	66806PG	66808PG	66888PG	66809PG	66812PG	66816PG	66818PG
Champaign Gold Metallic	CODE	66801CG	66802CG	66803CG	66804CG	66806CG	66808CG	66888CG	66809CG	66812CG	66816CG	66818CG
Carmarine Red Metallic	CODE	66801CR	66802CR	66803CR	66804CR	66806CR	66808CR	66888CR	66809CR	66812CR	66816CR	66818CR
Olive Green Metallic	CODE	66801OG	66802OG	66803OG	66804OG	66806OG	66808OG	66888OG	66809OG	66812OG	66816OG	66818OG
Charcoal Black	CODE	66801CB	66802CB	66803CB	66804CB	66806CB	66808CB	66888CB	66809CB	66812CB	66816CB	66818CB
Rose Gold Metallic	CODE	66801RG	66802RG	66803RG	66804RG	66806RG	66808RG	66888RG	66809RG	66812RG	66816RG	66818RG
<b>Unit Sale Price Rs per number</b>		<b>267</b>	<b>267</b>	<b>340</b>	<b>403</b>	<b>551</b>	<b>707</b>	<b>707</b>	<b>872</b>	<b>951</b>	<b>977</b>	<b>1014</b>
Maximum Retail Price (Inclusive of all taxes) Rs.		2670	2670	3400	4030	5510	7070	3535	8720	4755	4885	5070
Dark Walnut	CODE	66801DW	66802DW	66803DW	66804DW	66806DW	66808DW	66888DW	66809DW	66812DW	66816DW	66818DW
Oak Wood	CODE	66801OW	66802OW	66803OW	66804OW	66806OW	66808OW	66888OW	66809OW	66812OW	66816OW	66818OW
<b>Unit Sale Price Rs per number</b>		<b>393</b>	<b>393</b>	<b>500</b>	<b>593</b>	<b>814</b>	<b>1042</b>	<b>1042</b>	<b>1286</b>	<b>1404</b>	<b>1443</b>	<b>1499</b>
Maximum Retail Price (Inclusive of all taxes) Rs.		3930	3930	5000	5930	8140	10420	5210	12860	7020	7215	7495
Standards Packing Quantity (Number)		10	10	10	10	10	10	5	10	5	5	5





# CLEAR

## GLASS PLATE WITHOUT COLLAR

GLASS PLATE	MODULE	1 Module	2 Module	3 Module	4 Module	6 Module	8 Module Horizontal	8 Module Square	12 Module	16 Module	18 Module
Pure White	CODE	66901GPWCL	66902GPWCL	66903GPWCL	66904GPWCL	66906GPWCL	66908GPWCL	66988GPWCL	66912GPWCL	66916GPWCL	66918GPWCL
Space Black	CODE	66901GSBCL	66902GSBCL	66903GSBCL	66904GSBCL	66906GSBCL	66908GSBCL	66988GSBCL	66912GSBCL	66916GSBCL	66918GSBCL
Aqua Blue	CODE	66901GABCL	66902GABCL	66903GABCL	66904GABCL	66906GABCL	66908GABCL	66988GABCL	66912GABCL	66916GABCL	66918GABCL
Starline Grey	CODE	66901MSGCL	66902MSGCL	66903MSGCL	66904MSGCL	66906MSGCL	66908MSGCL	66988MSGCL	66912MSGCL	66916MSGCL	66918MSGCL
Starline Copper	CODE	66901MSCCL	66902MSCCL	66903MSCCL	66904MSCCL	66906MSCCL	66908MSCCL	66988MSCCL	66912MSCCL	66916MSCCL	66918MSCCL
<b>Unit Sale Price Rs per number</b>		<b>1248</b>	<b>1248</b>	<b>1608</b>	<b>1855</b>	<b>2647</b>	<b>3305</b>	<b>3305</b>	<b>4107</b>	<b>4617</b>	<b>4817</b>
Maximum Retail Price (Inclusive of all taxes) Rs.		6240	6240	8040	9275	13235	16525	16525	20535	23085	24085
Standards Packing Quantity (Number)		5	5	5	5	5	5	5	5	5	5



## GLASS PLATE WITH CHROME COLLAR

GLASS PLATE	MODULE	1 Module	2 Module	3 Module	4 Module	6 Module	8 Module Horizontal	8 Module Square	12 Module	16 Module	18 Module
Pure White	CODE	66901GPW	66902GPW	66903GPW	66904GPW	66906GPW	66908GPW	66988GPW	66912GPW	66916GPW	66918GPW
Space Black	CODE	66901GSB	66902GSB	66903GSB	66904GSB	66906GSB	66908GSB	66988GSB	66912GSB	66916GSB	66918GSB
Aqua Blue	CODE	66901GAB	66902GAB	66903GAB	66904GAB	66906GAB	66908GAB	66988GAB	66912GAB	66916GAB	66918GAB
<b>Unit Sale Price Rs per number</b>		<b>1248</b>	<b>1248</b>	<b>1608</b>	<b>1855</b>	<b>2647</b>	<b>3305</b>	<b>3305</b>	<b>4107</b>	<b>4617</b>	<b>4817</b>
Maximum Retail Price (Inclusive of all taxes) Rs.		6240	6240	8040	9275	13235	16525	16525	20535	23085	24085
Starline Copper	CODE	66901MSC	66902MSC	66903MSC	66904MSC	66906MSC	66908MSC	66988MSC	66912MSC	66916MSC	66918MSC
Starline Grey	CODE	66901MSG	66902MSG	66903MSG	66904MSG	66906MSG	66908MSG	66988MSG	66912MSG	66916MSG	66918MSG
<b>Unit Sale Price Rs per number</b>		<b>1248</b>	<b>1248</b>	<b>1608</b>	<b>1855</b>	<b>2647</b>	<b>3305</b>	<b>3305</b>	<b>4107</b>	<b>4617</b>	<b>4817</b>
Maximum Retail Price (Inclusive of all taxes) Rs.		6240	6240	8040	9275	13235	16525	16525	20535	23085	24085
Standards Packing Quantity (Number)		5	5	5	5	5	5	5	5	5	5

# SHEEN



METAL PLATE	MODULE	1 Module	2 Module	3 Module	4 Module	6 Module	8 Module Horizontal	8 Module Square	12 Module	16 Module	18 Module
Gold	CODE	66901GD	66902GD	66903GD	66904GD	66906GD	66908GD	66988GD	66912GD	66916GD	66918GD
<b>Unit Sale Price Rs per number</b>		<b>1443</b>	<b>1443</b>	<b>1689</b>	<b>1980</b>	<b>2593</b>	<b>2959</b>	<b>2959</b>	<b>4318</b>	<b>5332</b>	<b>5545</b>
Maximum Retail Price (Inclusive of all taxes) Rs.		7215	7215	8445	9900	12965	14795	14795	21590	26660	27725
Brushed Aluminum	CODE	66901BA	66902BA	66903BA	66904BA	66906BA	66908BA	66988BA	66912BA	66916BA	66918BA
<b>Unit Sale Price Rs per number</b>		<b>1229</b>	<b>1229</b>	<b>1436</b>	<b>1679</b>	<b>2204</b>	<b>2518</b>	<b>2518</b>	<b>3666</b>	<b>4532</b>	<b>4714</b>
Maximum Retail Price (Inclusive of all taxes) Rs.		6145	6145	7180	8395	11020	12590	12590	18330	22660	23570
Standards Packing Quantity (Number)		5	5	5	5	5	5	5	5	5	5



Note : Antimicrobial series is also available through pre order





Roma Mini MCB SP



Roma Mini MCB DP



Roma Mini MCB SP



Roma Mini MCB DP



Roma Mini MCB SP



Roma Mini MCB DP



Roma Mini MCB SP



Roma Mini MCB DP

Item	Description	HSN	Unit Sale Price Rs per number	Standard Packing Quantity (Number)	Maximum Retail Price (Inclusive of all taxes) Rs.
------	-------------	-----	-------------------------------	------------------------------------	---

**ROMA MINI MODULAR MCB 'C' TYPE (WHITE)**

66151	ROMA 6A SP 'C' MINI MCB	85362030	<b>385</b>	12	4620
66152	ROMA 10A SP 'C' MINI MCB	85362030	<b>385</b>	12	4620
66153	ROMA 16A SP 'C' MINI MCB	85362030	<b>385</b>	12	4620
66154	ROMA 20A SP 'C' MINI MCB	85362030	<b>385</b>	12	4620
66155	ROMA 25A SP 'C' MINI MCB	85362030	<b>385</b>	12	4620
66156	ROMA 32A SP 'C' MINI MCB	85362030	<b>385</b>	12	4620
66157	ROMA 6A DP 'C' MINI MCB	85362030	<b>840</b>	6	5040
66158	ROMA 10A DP 'C' MINI MCB	85362030	<b>840</b>	6	5040
66159	ROMA 16A DP 'C' MINI MCB	85362030	<b>840</b>	6	5040
66160	ROMA 20A DP 'C' MINI MCB	85362030	<b>840</b>	6	5040
66161	ROMA 25A DP 'C' MINI MCB	85362030	<b>840</b>	6	5040
66162	ROMA 32A DP 'C' MINI MCB	85362030	<b>840</b>	6	5040

**ROMA MINI MODULAR MCB 'C' TYPE (BLACK)**

66151B	ROMA 6A SP 'C' MINI MCB (BLACK)	85362030	<b>420</b>	12	5040
66152B	ROMA 10A SP 'C' MINI MCB (BLACK)	85362030	<b>420</b>	12	5040
66153B	ROMA 16A SP 'C' MINI MCB (BLACK)	85362030	<b>420</b>	12	5040
66154B	ROMA 20A SP 'C' MINI MCB (BLACK)	85362030	<b>420</b>	12	5040
66155B	ROMA 25A SP 'C' MINI MCB (BLACK)	85362030	<b>420</b>	12	5040
66156B	ROMA 32A SP 'C' MINI MCB (BLACK)	85362030	<b>420</b>	12	5040
66157B	ROMA 6A DP 'C' MINI MCB (BLACK)	85362030	<b>895</b>	6	5370
66158B	ROMA 10A DP 'C' MINI MCB (BLACK)	85362030	<b>895</b>	6	5370
66159B	ROMA 16A DP 'C' MINI MCB (BLACK)	85362030	<b>895</b>	6	5370
66160B	ROMA 20A DP 'C' MINI MCB (BLACK)	85362030	<b>895</b>	6	5370
66161B	ROMA 25A DP 'C' MINI MCB (BLACK)	85362030	<b>895</b>	6	5370
66162B	ROMA 32A DP 'C' MINI MCB (BLACK)	85362030	<b>895</b>	6	5370

**ROMA MINI MODULAR MCB 'C' TYPE (SILVER)**

66151S	ROMA 6A SP 'C' MINI MCB (SILVER)	85362030	<b>420</b>	12	5040
66152S	ROMA 10A SP 'C' MINI MCB (SILVER)	85362030	<b>420</b>	12	5040
66153S	ROMA 16A SP 'C' MINI MCB (SILVER)	85362030	<b>420</b>	12	5040
66154S	ROMA 20A SP 'C' MINI MCB (SILVER)	85362030	<b>420</b>	12	5040
66155S	ROMA 25A SP 'C' MINI MCB (SILVER)	85362030	<b>420</b>	12	5040
66156S	ROMA 32A SP 'C' MINI MCB (SILVER)	85362030	<b>420</b>	12	5040
66157S	ROMA 6A DP 'C' MINI MCB (SILVER)	85362030	<b>895</b>	6	5370
66158S	ROMA 10A DP 'C' MINI MCB (SILVER)	85362030	<b>895</b>	6	5370
66159S	ROMA 16A DP 'C' MINI MCB (SILVER)	85362030	<b>895</b>	6	5370
66160S	ROMA 20A DP 'C' MINI MCB (SILVER)	85362030	<b>895</b>	6	5370
66161S	ROMA 25A DP 'C' MINI MCB (SILVER)	85362030	<b>895</b>	6	5370
66162S	ROMA 32A DP 'C' MINI MCB (SILVER)	85362030	<b>895</b>	6	5370

**ROMA MINI MODULAR MCB 'C' TYPE (SILVER)**

66151GB	ROMA 6A SP 'C' MINI MCB (SILVER)	85362030	<b>420</b>	12	5040
66152GB	ROMA 10A SP 'C' MINI MCB (SILVER)	85362030	<b>420</b>	12	5040
66153GB	ROMA 16A SP 'C' MINI MCB (SILVER)	85362030	<b>420</b>	12	5040
66154GB	ROMA 20A SP 'C' MINI MCB (SILVER)	85362030	<b>420</b>	12	5040
66155GB	ROMA 25A SP 'C' MINI MCB (SILVER)	85362030	<b>420</b>	12	5040
66156GB	ROMA 32A SP 'C' MINI MCB (SILVER)	85362030	<b>420</b>	12	5040
66157GB	ROMA 6A DP 'C' MINI MCB (SILVER)	85362030	<b>895</b>	6	5370
66158GB	ROMA 10A DP 'C' MINI MCB (SILVER)	85362030	<b>895</b>	6	5370
66159GB	ROMA 16A DP 'C' MINI MCB (SILVER)	85362030	<b>895</b>	6	5370
66160GB	ROMA 20A DP 'C' MINI MCB (SILVER)	85362030	<b>895</b>	6	5370
66161GB	ROMA 25A DP 'C' MINI MCB (SILVER)	85362030	<b>895</b>	6	5370
66162GB	ROMA 32A DP 'C' MINI MCB (SILVER)	85362030	<b>895</b>	6	5370



66662



66663



66664



66770

Note : Do not use "Hard Cleaning Agent" for cleaning purpose.

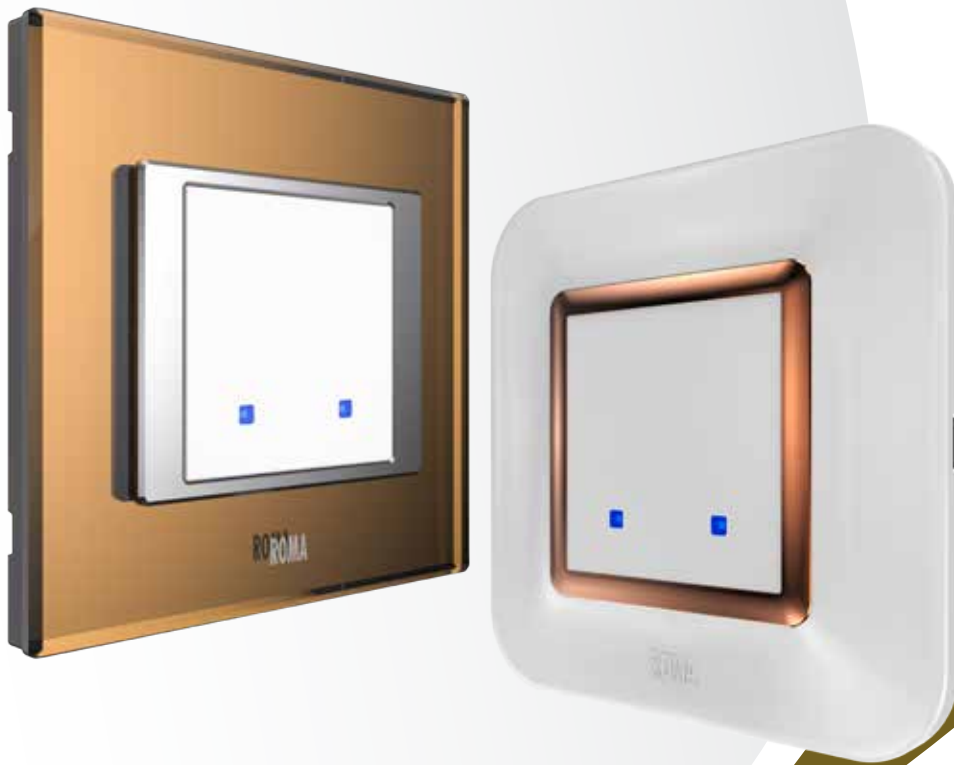
Item	Description	HSN	Unit Sale Price Rs per number	Standard Packing Quantity (Number)	Maximum Retail Price (Inclusive of all taxes) Rs.
<b>WEATHERPROOF BOX, IP55</b>					
66662	2M, Weatherproof Box (IP55), Grey Colour	85365090	<b>1736</b>	1	1736
66663	3M, Weatherproof Box (IP55), Grey Colour	85365090	<b>1857</b>	1	1857
66664	4M, Weatherproof Box (IP55), Grey Colour	85365090	<b>1984</b>	1	1984
<b>FLOOR JUNCTION BOX</b>					
66770	18Module Floor Junction Box	85381090	<b>11474</b>	1	11474

Note : Antimicrobial series is also available through pre order

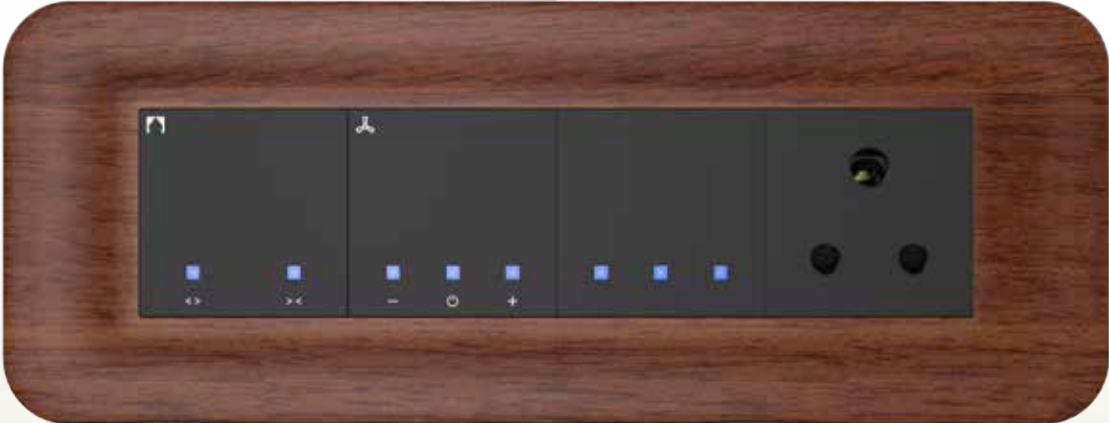


# Smartness Meets Glamour

Powered by  
**MirAie**  
Connected Living



**Functionality Meets Aesthetics**  
**Blends with Wiring Devices Accessories**



Wi-Fi Based



Feather Touch



Control From  
Anywhere



Scenario Control



Supports Voice  
Command



ON/OFF  
Scheduling



## SMART TOUCH SWITCH



71022

71023

71016



71026

71027 / 71030

71028



71022B

71023B

71016B



71026B

71027B / 71030B

71028B



71022S

71023S

71016S



71026S

71027S / 71030S

71028S



71022GB

71023GB

71016GB



71026GB

71027GB / 71030GB

71028GB

Item	Description	HSN	Unit Sale Price Rs per number	Standard Packing Quantity (Number)	Maximum Retail Price (Inclusive of all taxes) Rs.
<b>SMART TOUCH SWITCH - WHITE</b>					
71022	Switch 5A, 2 Channel, 2 Module	85423100	<b>3400</b>	4	13600
71023	Switch 5A, 3 Channel, 2 Module	85423100	<b>3800</b>	4	15200
71016	Switch 16A, 1Channel, 2 Module	85423100	<b>3800</b>	4	15200
71026	Fan Regulator 100W, 1Channel, 2 Module	85365090	<b>4100</b>	4	16400
71027	Dimmer 400W, 1 Channel, 2 Module	84149030	<b>4200</b>	4	16800
71030	Dimmer 400W, Leading Edge, 1 Channel, 2 Module	84149030	<b>4200</b>	4	16800
71028	Curtain Controller 100W, 1 Channel, 2 Module	85176290	<b>4200</b>	4	16800
<b>SMART TOUCH SWITCH - BLACK</b>					
71022B	Switch 5A, 2 Channel, 2 Module	85423100	<b>3500</b>	4	14000
71023B	Switch 5A, 3 Channel, 2 Module	85423100	<b>3900</b>	4	15600
71016B	Switch 16A, 1Channel, 2 Module	85423100	<b>3900</b>	4	15600
71026B	Fan Regulator 100W, 1Channel, 2 Module	85365090	<b>4200</b>	4	16800
71027B	Dimmer 400W, 1 Channel, 2 Module	84149030	<b>4300</b>	4	17200
71030B	Dimmer 400W, Leading Edge, 1 Channel, 2 Module	84149030	<b>4300</b>	4	17200
71028B	Curtain Controller 100W, 1 Channel, 2 Module	85176290	<b>4300</b>	4	17200
<b>SMART TOUCH SWITCH - SILVER</b>					
71022S	Switch 5A, 2 Channel, 2 Module	85423100	<b>3500</b>	4	14000
71023S	Switch 5A, 3 Channel, 2 Module	85423100	<b>3900</b>	4	15600
71016S	Switch 16A, 1Channel, 2 Module	85423100	<b>3900</b>	4	15600
71026S	Fan Regulator 100W, 1Channel, 2 Module	85365090	<b>4200</b>	4	16800
71027S	Dimmer 400W, 1 Channel, 2 Module	84149030	<b>4300</b>	4	17200
71030S	Dimmer 400W, Leading Edge, 1 Channel, 2 Module	84149030	<b>4300</b>	4	17200
71028S	Curtain Controller 100W, 1 Channel, 2 Module	85176290	<b>4300</b>	4	17200
<b>SMART TOUCH SWITCH - GRAPHITE BLACK</b>					
71022GB	Switch 5A, 2 Channel, 2 Module	85423100	<b>3500</b>	4	14000
71023GB	Switch 5A, 3 Channel, 2 Module	85423100	<b>3900</b>	4	15600
71016GB	Switch 16A, 1Channel, 2 Module	85423100	<b>3900</b>	4	15600
71026GB	Fan Regulator 100W, 1Channel, 2 Module	85365090	<b>4200</b>	4	16800
71027GB	Dimmer 400W, 1 Channel, 2 Module	84149030	<b>4300</b>	4	17200
71030GB	Dimmer 400W, Leading Edge, 1 Channel, 2 Module	84149030	<b>4300</b>	4	17200
71028GB	Curtain Controller 100W, 1 Channel, 2 Module	85176290	<b>4300</b>	4	17200



#### TERMS AND CONDITIONS

- 1) Prices are in INR (₹).
- 2) All prices are subject to the general terms and conditions of our business.
- 3) Prices are subject to change without prior notice.
- 4) This price list supersedes all our previous price lists.
- 5) If any dispute should arise it will be subject to Thane jurisdiction.
- 6) Company reserves the right to issue amendments which may arise due to any errors in the price list.
- 7) Colour in images are for reference purpose only, please see product for actual colour.

Due to continuous improvements in product design and development and manufacturing methods, the product may differ in some aspects from the details provided herein.

#### PANASONIC LIFE SOLUTIONS INDIA PVT. LTD.

**Corporate & Head Office:** 3rd Floor, B Wing, I-Think Techno Campus,  
Pokharan Road No.2, Thane (W), Thane - 400 607, Maharashtra.  
Tel. 022 4222 8888 | Fax. 022 4222 8884  
Customer Care no.: 022-41304130 | WhatsApp: 9136028606  
Email: [wecare@in.panasonic.com](mailto:wecare@in.panasonic.com) | [www.isin.panasonic.com](http://www.isin.panasonic.com)

**Registered Office:** 12th Floor, Ambience Tower, Ambience Island,  
NH-48, Gurugram - 122 002, Haryana.