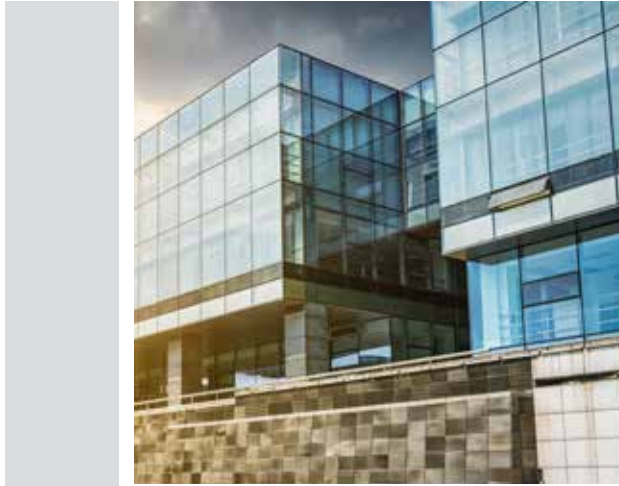


# COMPLETE PROTECTION FOR YOUR SPACES.



Range of Protection Devices



Our Pricelist is now  
**Available Online**  
Scan & download

PRICELIST  
**FEB 2026**

---

## Superior Quality by Japanese Process

Anchor's Switchgear is manufactured in its state-of-the-art facility at Haridwar, currently possessing an annual manufacturing capacity of over 25 million switchgear products.

Panasonic has brought its best practices that have been fine-tuned for nearly a century to equip our facilities with best in class manufacturing technology. In 2011, Anchor started its Switchgear Design and Development Centre in New Delhi. Panasonic has brought in stellar innovation in this business vertical of Anchor bringing in the globe's best technology offerings to India. The facility houses the latest injection moulding machine latest automatic welding machines and a in-house welding shop. Some of the most advanced technological instruments such as Semi-automatic yoke riveting machines, Production test equipments, testing panels and HV testing machines ensure consistent upgradation in the manufacturing standards. Anchor's Testing Lab is also equipped with latest instruments for "RoHS compliance" testing. It is extensively focussed on upgrading the testing machinery ensuring consistency in the product quality through specialized instruments like 10x profile projector/salt spray chamber & spring load testing machines.

The Haridwar facility is certified by TUV for ISO- 9001-2008. All switchgear products are manufactured and tested as per the IS/IEC standards defined by BIS.



Haridwar Factory - Unit 1



Haridwar Factory - Unit 2

# Uno



# Uno Plus



# Achievement

---



Pune Metro



Central Vista Project



Airport - Madurai, Ayodhya & Delhi Terminal 1



CIDCO Mass Housing



Mango Tree Hotel



Lodha Developers



Shapoorji Housing Development



Godrej Properties

# Index

---

1. DIGITAL TIMER SWITCH	6
2. MODULAR CONTACTOR	6 - 7
3. MCCB	8
4. MCCB ACCESSORIES	9
5. MCCB ENCLOSURE	10
6. VTPN DISTRIBUTION BOARD	10
7. BUSBAR DISTRIBUTION BOARD	10
8. PHASE SELECTOR ROTARY SWITCH	10
9. ROTARY SWITCH ENCLOSURE	10
10. RCBO	11
11. MCB - UNO & UNO PLUS	12 - 15
12. UNO ISOLATOR	16
13. MODULAR CHANGEOVER SWITCH	16
14. UNO PLUS ISOLATOR	17
15. ACCL	18
16. RCCB - UNO & UNO PLUS	19 - 20
17. AC BOX	21
18. UNO MODULAR CHANGEOVER SWITCH enklözr	21
19. UNO GUARD	21
20. MINI MCB	22 - 29
21. MCB ENCLOSURE / DB - UNO & UNO PLUS	30 - 34
22. DB ACCESSORIES	35

# MODULAR CONTACTOR



CODE	DESCRIPTION	Unit Sale Price Rs. per number	Standard Packing Quantity (Number)	Maximum Retail Price of Standard Packing (Inclusive of all taxes) Rs.	Units in Master Packing (Number) Wholesale Pack
<b>DIGITAL TIMER SWITCH</b>		<b>HSN Code : 91070000</b>			
98658	Digital Timer Switch 1 relay	3710	5	18550	5
98659	Digital Timer Switch 2 relay	5385	5	26925	5
<b>MODULAR CONTACTOR DP - 10A to 25A</b>		<b>HSN Code : 85364900</b>			
99151	10A DP MODULAR CONTACTOR (1NO+1NC)	2692	12	32304	120
99152	10A DP MODULAR CONTACTOR (2NO)	2692	12	32304	120
99153	10A DP MODULAR CONTACTOR (2NC)	2692	12	32304	120
99154	16A DP MODULAR CONTACTOR (2NO)	2692	12	32304	120
99155	16A DP MODULAR CONTACTOR (1NO+1NC)	2692	12	32304	120
99156	16A DP MODULAR CONTACTOR (2NC)	2692	12	32304	120
99157	20A DP MODULAR CONTACTOR (2NO)	2692	12	32304	120
99158	20A DP MODULAR CONTACTOR (1NO+1NC)	2692	12	32304	120
99159	20A DP MODULAR CONTACTOR (2NC)	2692	12	32304	120
99160	25A DP MODULAR CONTACTOR (2NO)	2692	12	32304	120
99161	25A DP MODULAR CONTACTOR (1NO+1NC)	2692	12	32304	120
99162	25A DP MODULAR CONTACTOR (2NC)	2692	12	32304	120
<b>MODULAR CONTACTOR DP - 32A to 63A</b>		<b>HSN Code : 85364900</b>			
99163	32A DP MODULAR CONTACTOR (1NO+1NC)	2692	6	16152	60
99164	32A DP MODULAR CONTACTOR (2NO)	2692	6	16152	60
99165	32A DP MODULAR CONTACTOR (2NC)	2692	6	16152	60
99166	40A DP MODULAR CONTACTOR (2NO)	2947	6	17682	60
99167	40A DP MODULAR CONTACTOR (1NO+1NC)	2947	6	17682	60
99168	40A DP MODULAR CONTACTOR (2NC)	2947	6	17682	60
99169	63A DP MODULAR CONTACTOR (2NO)	3530	6	21180	60
99170	63A DP MODULAR CONTACTOR (1NO+1NC)	3530	6	21180	60
99171	63A DP MODULAR CONTACTOR (2NC)	3530	6	21180	60

# MODULAR CONTACTOR

CODE	DESCRIPTION	Unit Sale Price Rs. per number	Standard Packing Quantity (Number)	Maximum Retail Price of Standard Packing (Inclusive of all taxes) Rs.	Units in Master Packing (Number) Wholesale Pack
<b>MODULAR CONTACTOR FP - 10A to 25A</b>		<b>HSN Code : 85364900</b>			
99172	10A FP MODULAR CONTACTOR (2NO+2NC)	3530	6	21180	60
99173	10A FP MODULAR CONTACTOR (3NO+1NC)	3530	6	21180	60
99174	10A FP MODULAR CONTACTOR (4NO)	3530	6	21180	60
99175	10A FP MODULAR CONTACTOR (4NC)	3530	6	21180	60
99176	16A FP MODULAR CONTACTOR (4NO)	5390	6	32340	60
99177	16A FP MODULAR CONTACTOR (2NO+2NC)	5390	6	32340	60
99178	16A FP MODULAR CONTACTOR (3NO+1NC)	5390	6	32340	60
99179	16A FP MODULAR CONTACTOR (4NC)	5390	6	32340	60
99180	20A FP MODULAR CONTACTOR (4NO)	5390	6	32340	60
99181	20A FP MODULAR CONTACTOR (2NO+2NC)	5390	6	32340	60
99182	20A FP MODULAR CONTACTOR (3NO+1NC)	5390	6	32340	60
99183	20A FP MODULAR CONTACTOR (4NC)	5390	6	32340	60
99184	25A FP MODULAR CONTACTOR (4NO)	5390	6	32340	60
99185	25A FP MODULAR CONTACTOR (2NO+2NC)	5390	6	32340	60
99186	25A FP MODULAR CONTACTOR (3NO+1NC)	5390	6	32340	60
99187	25A FP MODULAR CONTACTOR (4NC)	5390	6	32340	60
<b>MODULAR CONTACTOR FP - 32A to 63A</b>		<b>HSN Code : 85364900</b>			
99188	32A FP MODULAR CONTACTOR (2NO+2NC)	5888	4	23552	40
99189	32A FP MODULAR CONTACTOR (3NO+1NC)	5888	4	23552	40
99190	32A FP MODULAR CONTACTOR (4NO)	5888	4	23552	40
99191	32A FP MODULAR CONTACTOR (4NC)	5888	4	23552	40
99192	40A FP MODULAR CONTACTOR (4NO)	5888	4	23552	40
99193	40A FP MODULAR CONTACTOR (2NO+2NC)	5888	4	23552	40
99194	40A FP MODULAR CONTACTOR (3NO+1NC)	5888	4	23552	40
99195	40A FP MODULAR CONTACTOR (4NC)	5888	4	23552	40
99196	63A FP MODULAR CONTACTOR (4NO)	7054	4	28216	40
99197	63A FP MODULAR CONTACTOR (2NO+2NC)	7054	4	28216	40
99198	63A FP MODULAR CONTACTOR (3NO+1NC)	7054	4	28216	40
99199	63A FP MODULAR CONTACTOR (4NC)	7054	4	28216	40



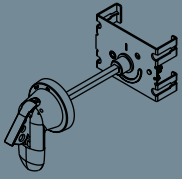
# BO MCCB

CODE	DESCRIPTION	Unit Sale Price Rs. per number	Standard Packing Quantity (Number)	Maximum Retail Price of Standard Packing (Inclusive of all taxes) Rs.	Units in Master Packing (Number) Wholesale Pack
<b>BO MCCB 125AF</b>		<b>HSN Code : 85362030</b>			
98521	20A 10kA 3P Frame125 ATFM	3095	1	3095	6
98522	25A 10kA 3P Frame125 ATFM	3095	1	3095	6
98523	32A 10kA 3P Frame125 ATFM	3095	1	3095	6
98524	40A 10kA 3P Frame125 ATFM	3095	1	3095	6
98525	50A 10kA 3P Frame125 ATFM	3095	1	3095	6
98526	63A 10kA 3P Frame125 ATFM	3095	1	3095	6
98527	80A 10kA 3P Frame125 ATFM	3339	1	3339	6
98528	100A 10kA 3P Frame125 ATFM	3339	1	3339	6
98529	125A 10kA 3P Frame125 ATFM	4850	1	4850	6
98530	20A 10kA 4P Frame125 ATFM	4267	1	4267	4
98531	25A 10kA 4P Frame125 ATFM	4267	1	4267	4
98532	32A 10kA 4P Frame125 ATFM	4267	1	4267	4
98533	40A 10kA 4P Frame125 ATFM	4267	1	4267	4
98534	50A 10kA 4P Frame125 ATFM	4267	1	4267	4
98535	63A 10kA 4P Frame125 ATFM	4267	1	4267	4
98536	80A 10kA 4P Frame125 ATFM	4622	1	4622	4
98537	100A 10kA 4P Frame125 ATFM	4622	1	4622	4
98538	125A 10kA 4P Frame125 ATFM	5475	1	5475	4
<b>BO MCCB 250AF</b>		<b>HSN Code : 85362030</b>			
98561	125A 18KA 3P Frame250 FTFM	10595	1	10595	1
98562	160A 18KA 3P Frame250 FTFM	10595	1	10595	1
98563	200A 18KA 3P Frame250 FTFM	12344	1	12344	1
98564	250A 18KA 3P Frame250 FTFM	16308	1	16308	1
98569	125A 25KA 3P Frame250 ATAM	14093	1	14093	1
98570	160A 25KA 3P Frame250 ATAM	14798	1	14798	1
98571	200A 25KA 3P Frame250 ATAM	16753	1	16753	1
98572	250A 25KA 3P Frame250 ATAM	20914	1	20914	1
98565	125A 18KA 4P Frame250 FTFM	12344	1	12344	1
98566	160A 18KA 4P Frame250 FTFM	12344	1	12344	1
98567	200A 18KA 4P Frame250 FTFM	14792	1	14792	1
98568	250A 18KA 4P Frame250 FTFM	18518	1	18518	1
98573	125A 25KA 4P Frame250 ATAM	17119	1	17119	1
98574	160A 25KA 4P Frame250 ATAM	17978	1	17978	1
98575	200A 25KA 4P Frame250 ATAM	20426	1	20426	1
98576	250A 25KA 4P Frame250 ATAM	25196	1	25196	1



# MCCB ACCESSORIES

CODE	DESCRIPTION	Unit Sale Price Rs. per number	Standard Packing Quantity (Number)	Maximum Retail Price of Standard Packing (Inclusive of all taxes) Rs.	Units in Master Packing (Number) Wholesale Pack
<b>PANEL MOUNTED ROTARY OPERATING HANDLE (ROH)</b>			<b>HSN Code : 85362030</b>		
98559	Panel Mounted Extended Rotary Handle for B0 MCCB 125A	2041	1	2041	1
98577	Panel Mounted Extended Rotary Handle for B0 MCCB 250A	2320	1	2320	1
<b>AUXILIARY SWITCH (AUX)</b>			<b>HSN Code : 85362030</b>		
98578	250AF UNO AUX-L 1 NO+1NC FOR B0 MCCB	1161	1	1161	1
98579	250AF UNO AUX-R 1NO+1NC B0 MCCB Accessory	1161	1	1161	1
<b>ALARM SWITCH (ALR)</b>			<b>HSN Code : 85362030</b>		
98580	250AF UNO ALR-L 1NO+1NC B0 MCCB Accessory	1161	1	1161	1
98581	250AF UNO ALR-R 1NO+1NC B0 MCCB Accessory	1161	1	1161	1
<b>COMBINATION SWITCH (AUX+ALR)</b>			<b>HSN Code : 85362030</b>		
98594	250AF UNO Combi Switch(AUX+ALR)-L B0 MCCB Accessory	2624	1	2624	1
98595	250AF UNO Combi Switch(AUX+ALR)-R B0 MCCB Accessory	2624	1	2624	1
<b>SHUNT RELEASE (SHT)</b>			<b>HSN Code : 85362030</b>		
98582	250AF UNO SHT 220Vac B0 MCCB Accessory	2321	1	2321	1
98583	250AF UNO SHT 415Vac B0 MCCB Accessory	2321	1	2321	1
98584	250AF UNO SHT 24Vdc B0 MCCB Accessory	2321	1	2321	1
98585	250AF UNO SHT 48Vdc B0 MCCB Accessory	2321	1	2321	1
98586	250AF UNO SHT 110Vdc B0 MCCB Accessory	2321	1	2321	1
98587	250AF UNO SHT 220Vdc B0 MCCB Accessory	2321	1	2321	1
<b>UNDER VOLTAGE TRIP DEVICE (UVT)</b>			<b>HSN Code : 85362030</b>		
98588	250AF UNO UVT-L 220Vac B0 MCCB Accessory	4256	1	4256	1
98589	250AF UNO UVT-L 415Vac B0 MCCB Accessor	4256	1	4256	1
98590	250AF UNO UVT-L 24Vdc B0 MCCB Accessory	4256	1	4256	1
98591	250AF UNO UVT-L 48Vdc B0 MCCB Accessory	4256	1	4256	1
98592	250AF UNO UVT-L 110Vdc B0 MCCB AccessoryY	4256	1	4256	1
98593	250AF UNO UVT-L 220Vdc B0 MCCB Accessory	4256	1	4256	1



# DB / PHASE SELECTOR

CODE	DESCRIPTION	Unit Sale Price Rs. per number	Standard Packing Quantity (Number)	Maximum Retail Price of Standard Packing (Inclusive of all taxes) Rs.	Units in Master Packing (Number) Wholesale Pack
<b>UNO B0/B1 MCCB ENCLOSURE</b>		<b>HSN Code : 85371000</b>			
98539	Enclosure w/o 125AF B0 MCCB	2099	1	2099	1
98540	Enclosure w/o 125AF B1 MCCB	2019	1	2019	1
98560	Enclosure w/o 250AF B0 MCCB	3213	1	3213	1
<b>UNO VTPN DISTRIBUTION BOARD - B0 MCCB</b>		<b>HSN Code : 85371000</b>			
98675	4 WAY VTPN DOUBLE DOOR DB WITH B0-125AF FRAME 1 W/O MCCB	15243	1	15243	1
98676	6 WAY VTPN DOUBLE DOOR DB WITH B0-125AF FRAME 1 W/O MCCB	16669	1	16669	1
98677	8 WAY VTPN DOUBLE DOOR DB WITH B0-125AF FRAME 1 W/O MCCB	18211	1	18211	1
98678	12 WAY VTPN DOUBLE DOOR DB WITH B0-125AF FRAME 1 W/O MCCB	21041	1	21041	1
98679	16 WAY VTPN DOUBLE DOOR DB WITH B0-125AF FRAME 1 W/O MCCB	24968	1	24968	1
98680	4 WAY VTPN DOUBLE DOOR DB WITH B0-250AF FRAME 2 W/O MCCB	18131	1	18131	1
98681	6 WAY VTPN DOUBLE DOOR DB WITH B0-250AF FRAME 2 W/O MCCB	20352	1	20352	1
98682	8 WAY VTPN DOUBLE DOOR DB WITH B0-250AF FRAME 2 W/O MCCB	22159	1	22159	1
98683	12 WAY VTPN DOUBLE DOOR DB WITH B0-250AF FRAME 2 W/O MCCB	24422	1	24422	1
98684	16 WAY VTPN DOUBLE DOOR DB WITH B0-250AF FRAME 2 W/O MCCB	28254	1	28254	1
<b>UNO BUSBAR DISTRIBUTION BOARD</b>		<b>HSN Code : 85371000</b>			
98377	4 Way 32 A Busbar DB (1.6 mm)	7240	1	7240	1
98378	4 Way 63 A Busbar DB (1.6 mm)	10494	1	10494	1
98379	4 Way 100 A Busbar DB (1.6 mm)	12084	1	12084	1
98380	4 Way 200 A Busbar DB (1.6 mm)	15338	1	15338	1
98381	4 Way 32 A Busbar DB (1 mm)	4341	1	4341	1
98382	4 Way 63 A Busbar DB (1 mm)	5645	1	5645	1
98383	4 Way 100 A Busbar DB (1 mm)	7674	1	7674	1
98384	4 Way 200 A Busbar DB (1 mm)	13605	1	13605	1
<b>UNO PHASE SELECTOR ROTARY SWITCH</b>		<b>HSN Code : 85362030</b>			
98651	25 A UNO Rotary Switch	952	1	952	10
98652	32 A UNO Rotary Switch	980	1	980	10
98653	40 A UNO Rotary Switch	1103	1	1103	10
98654	63 A UNO Rotary Switch	1540	1	1540	10
<b>UNO ROTARY SWITCH ENCLOSURE</b>		<b>HSN Code : 85362030</b>			
98655	40A UNO 1 Rotary Switch Enclosure	2783	1	2783	1
98656	63A UNO 1 Rotary Switch Enclosure	3153	1	3153	1
98459	40A UNO 3 Rotary Switch Enclosure	7112	1	7112	1
98460	63A UNO 3 Rotary Switch Enclosure	9806	1	9806	1



# RCBO

CODE DESCRIPTION

Unit Sale Price Rs. per number

Standard Packing Quantity (Number)

Maximum Retail Price of Standard Packing (Inclusive of all taxes) Rs.

Units in Master Packing (Number) Wholesale Pack

## UNO SPN RCBO

HSN Code : 85362030

98151	6A SPN 30mA UNO RCBO	5700	1	5700	12
98152	6A SPN 100mA UNO RCBO	7132	1	7132	12
98153	6A SPN 300mA UNO RCBO	7132	1	7132	12
98154	10A SPN 30mA UNO RCBO	5700	1	5700	12
98155	10A SPN 100mA UNO RCBO	7132	1	7132	12
98156	10A SPN 300mA UNO RCBO	7132	1	7132	12
98157	16A SPN 30mA UNO RCBO	5763	1	5763	12
98158	16A SPN 100mA UNO RCBO	6895	1	6895	12
98159	16A SPN 300mA UNO RCBO	7167	1	7167	12
98160	20A SPN 30mA UNO RCBO	5700	1	5700	12
98161	20A SPN 100mA UNO RCBO	7132	1	7132	12
98162	20A SPN 300mA UNO RCBO	7132	1	7132	12
98163	25A SPN 30mA UNO RCBO	5763	1	5763	12
98164	25A SPN 100mA UNO RCBO	6895	1	6895	12
98165	25A SPN 300mA UNO RCBO	7167	1	7167	12
98166	32A SPN 30mA UNO RCBO	6023	1	6023	12
98167	32A SPN 100mA UNO RCBO	6895	1	6895	12
98168	32A SPN 300mA UNO RCBO	7167	1	7167	12
98169	40A SPN 30mA UNO RCBO	6930	1	6930	12
98170	40A SPN 100mA UNO RCBO	7889	1	7889	12
98171	40A SPN 300mA UNO RCBO	8097	1	8097	12
98172	63A SPN 30mA UNO RCBO	8478	1	8478	12
98173	63A SPN 100mA UNO RCBO	9125	1	9125	12
98174	63A SPN 300mA UNO RCBO	9136	1	9136	12

## UNO TPN RCBO

HSN Code : 85362030

98175	6A TPN 30mA UNO RCBO	8085	1	8085	8
98176	6A TPN 100mA UNO RCBO	8743	1	8743	8
98177	6A TPN 300mA UNO RCBO	9096	1	9096	8
98178	10A TPN 30mA UNO RCBO	8085	1	8085	8
98179	10A TPN 100mA UNO RCBO	8743	1	8743	8
98180	10A TPN 300mA UNO RCBO	9096	1	9096	8
98181	16A TPN 30mA UNO RCBO	8085	1	8085	8
98182	16A TPN 100mA UNO RCBO	8743	1	8743	8
98183	16A TPN 300mA UNO RCBO	9096	1	9096	8
98184	20A TPN 30mA UNO RCBO	8085	1	8085	8
98185	20A TPN 100mA UNO RCBO	8743	1	8743	8
98186	20A TPN 300mA UNO RCBO	9096	1	9096	8
98187	25A TPN 30mA UNO RCBO	8085	1	8085	8
98188	25A TPN 100mA UNO RCBO	8743	1	8743	8
98189	25A TPN 300mA UNO RCBO	9096	1	9096	8
98190	32A TPN 30mA UNO RCBO	8483	1	8483	8
98191	32A TPN 100mA UNO RCBO	8824	1	8824	8
98192	32A TPN 300mA UNO RCBO	9176	1	9176	8
98193	40A TPN 30mA UNO RCBO	8541	1	8541	8
98194	40A TPN 100mA UNO RCBO	8997	1	8997	8
98195	40A TPN 300mA UNO RCBO	9361	1	9361	8
98196	63A TPN 30mA UNO RCBO	9350	1	9350	8
98197	63A TPN 100mA UNO RCBO	9916	1	9916	8
98198	63A TPN 300mA UNO RCBO	10083	1	10083	8



# UNO MCB (10kA)

CODE	DESCRIPTION	Unit Sale Price Rs. per number	Standard Packing Quantity (Number)	Maximum Retail Price of Standard Packing (Inclusive of all taxes) Rs.	Units in Master Packing (Number) Wholesale Pack
<b>SP MCB `B' TYPE</b>		<b>HSN Code : 85362030</b>			
98101	6A SP `B' UNO MCB	308	12	3696	120
98102	10A SP `B' UNO MCB	308	12	3696	120
98103	16A SP `B' UNO MCB	308	12	3696	120
98104	20A SP `B' UNO MCB	308	12	3696	120
98105	25A SP `B' UNO MCB	308	12	3696	120
98106	32A SP `B' UNO MCB	308	12	3696	120
<b>SP MCB `C' TYPE</b>		<b>HSN Code : 85362030</b>			
98001	6A SP `C' UNO MCB	308	12	3696	120
98002	10A SP `C' UNO MCB	308	12	3696	120
98003	16A SP `C' UNO MCB	308	12	3696	120
98004	20A SP `C' UNO MCB	308	12	3696	120
98005	25A SP `C' UNO MCB	308	12	3696	120
98006	32A SP `C' UNO MCB	308	12	3696	120
98007	40A SP `C' UNO MCB	732	12	8784	120
98008	63A SP `C' UNO MCB	825	12	9900	120
<b>SPN MCB `C' TYPE</b>		<b>HSN Code : 85362030</b>			
98009	6A SPN `C' UNO MCB	990	6	5940	60
98010	10A SPN `C' UNO MCB	990	6	5940	60
98011	16A SPN `C' UNO MCB	990	6	5940	60
98012	20A SPN `C' UNO MCB	990	6	5940	60
98013	25A SPN `C' UNO MCB	990	6	5940	60
98014	32A SPN `C' UNO MCB	990	6	5940	60
98015	40A SPN `C' UNO MCB	1551	6	9306	60
98016	63A SPN `C' UNO MCB	1777	6	10662	60
<b>DP MCB `C' TYPE</b>		<b>HSN Code : 85362030</b>			
98017	6A DP `C' UNO MCB	1084	6	6504	60
98018	10A DP `C' UNO MCB	1084	6	6504	60
98019	16A DP `C' UNO MCB	1084	6	6504	60
98020	20A DP `C' UNO MCB	1084	6	6504	60
98021	25A DP `C' UNO MCB	1084	6	6504	60
98022	32A DP `C' UNO MCB	1084	6	6504	60
98023	40A DP `C' UNO MCB	1628	6	9768	60
98024	63A DP `C' UNO MCB	1887	6	11322	60



# UNO MCB (10kA)



CODE	DESCRIPTION	Unit Sale Price Rs. per number	Standard Packing Quantity (Number)	Maximum Retail Price of Standard Packing (Inclusive of all taxes) Rs.	Units in Master Packing (Number) Wholesale Pack
<b>TP MCB `C' TYPE</b>		<b>HSN Code : 85362030</b>			
98025	6A TP `C' UNO MCB	1573	4	6292	40
98026	10A TP `C' UNO MCB	1573	4	6292	40
98027	16A TP `C' UNO MCB	1573	4	6292	40
98028	20A TP `C' UNO MCB	1573	4	6292	40
98029	25A TP `C' UNO MCB	1573	4	6292	40
98030	32A TP `C' UNO MCB	1573	4	6292	40
98031	40A TP `C' UNO MCB	2503	4	10012	40
98032	63A TP `C' UNO MCB	2668	4	10672	40
<b>TPN MCB `C' TYPE</b>		<b>HSN Code : 85362030</b>			
98033	6A TPN `C' UNO MCB	2013	3	6039	30
98034	10A TPN `C' UNO MCB	2013	3	6039	30
98035	16A TPN `C' UNO MCB	2013	3	6039	30
98036	20A TPN `C' UNO MCB	2013	3	6039	30
98037	25A TPN `C' UNO MCB	2013	3	6039	30
98038	32A TPN `C' UNO MCB	2013	3	6039	30
98039	40A TPN `C' UNO MCB	2926	3	8778	30
98040	63A TPN `C' UNO MCB	3058	3	9174	30
<b>FP MCB `C' TYPE</b>		<b>HSN Code : 85362030</b>			
98041	6A FP `C' UNO MCB	2222	3	6666	30
98042	10A FP `C' UNO MCB	2222	3	6666	30
98043	16A FP `C' UNO MCB	2222	3	6666	30
98044	20A FP `C' UNO MCB	2222	3	6666	30
98045	25A FP `C' UNO MCB	2222	3	6666	30
98046	32A FP `C' UNO MCB	2222	3	6666	30
98047	40A FP `C' UNO MCB	3075	3	9225	30
98048	63A FP `C' UNO MCB	3218	3	9654	30

# UNO PLUS MCB (10KA)



CODE	DESCRIPTION	Unit Sale Price Rs. per number	Standard Packing Quantity (Number)	Maximum Retail Price of Standard Packing (Inclusive of all taxes) Rs.	Units in Master Packing (Number) Wholesale Pack
<b>UNO PLUS MCB - SP</b>		<b>HSN Code : 85362030</b>			
98801	0.5A SP C UNO PLUS MCB	582	12	6984	120
98802	1A SP C UNO PLUS MCB	582	12	6984	120
98803	2A SP C UNO PLUS MCB	582	12	6984	120
98804	3A SP C UNO PLUS MCB	582	12	6984	120
98805	4A SP C UNO PLUS MCB	582	12	6984	120
98806	5A SP C UNO PLUS MCB	582	12	6984	120
98807	6A SP C UNO PLUS MCB	347	12	4164	120
98808	10A SP C UNO PLUS MCB	347	12	4164	120
98809	16A SP C UNO PLUS MCB	347	12	4164	120
98810	20A SP C UNO PLUS MCB	347	12	4164	120
98811	25A SP C UNO PLUS MCB	347	12	4164	120
98812	32A SP C UNO PLUS MCB	347	12	4164	120
98813	40A SP C UNO PLUS MCB	806	12	9672	120
98814	63A SP C UNO PLUS MCB	879	12	10548	120
<b>UNO PLUS MCB - SPN</b>		<b>HSN Code : 85362030</b>			
98815	0.5A SPN C UNO PLUS MCB	1350	6	8100	60
98816	1A SPN C UNO PLUS MCB	1350	6	8100	60
98817	2A SPN C UNO PLUS MCB	1350	6	8100	60
98818	3A SPN C UNO PLUS MCB	1350	6	8100	60
98819	4A SPN C UNO PLUS MCB	1350	6	8100	60
98820	5A SPN C UNO PLUS MCB	1350	6	8100	60
98821	6A SPN C UNO PLUS MCB	1075	6	6450	60
98822	10A SPN C UNO PLUS MCB	1075	6	6450	60
98823	16A SPN C UNO PLUS MCB	1075	6	6450	60
98824	20A SPN C UNO PLUS MCB	1075	6	6450	60
98825	25A SPN C UNO PLUS MCB	1075	6	6450	60
98826	32A SPN C UNO PLUS MCB	1075	6	6450	60
98827	40A SPN C UNO PLUS MCB	1691	6	10146	60
98828	63A SPN C UNO PLUS MCB	1893	6	11358	60
<b>UNO PLUS MCB - DP</b>		<b>HSN Code : 85362030</b>			
98829	0.5A DP C UNO PLUS MCB	1523	6	9138	60
98830	1A DP C UNO PLUS MCB	1523	6	9138	60
98831	2A DP C UNO PLUS MCB	1523	6	9138	60
98832	3A DP C UNO PLUS MCB	1523	6	9138	60
98833	4A DP C UNO PLUS MCB	1523	6	9138	60
98834	5A DP C UNO PLUS MCB	1523	6	9138	60
98835	6A DP C UNO PLUS MCB	1165	6	6990	60
98836	10A DP C UNO PLUS MCB	1165	6	6990	60
98837	16A DP C UNO PLUS MCB	1165	6	6990	60
98838	20A DP C UNO PLUS MCB	1165	6	6990	60
98839	25A DP C UNO PLUS MCB	1165	6	6990	60
98840	32A DP C UNO PLUS MCB	1165	6	6990	60
98841	40A DP C UNO PLUS MCB	1753	6	10518	60
98842	63A DP C UNO PLUS MCB	1977	6	11862	60

# UNO PLUS MCB (10KA)



CODE	DESCRIPTION	Unit Sale Price Rs. per number	Standard Packing Quantity (Number)	Maximum Retail Price of Standard Packing (Inclusive of all taxes) Rs.	Units in Master Packing (Number) Wholesale Pack
<b>UNO PLUS MCB - TP</b>		<b>HSN Code : 85362030</b>			
98843	0.5A TP C UNO PLUS MCB	1826	4	7304	40
98844	1A TP C UNO PLUS MCB	1826	4	7304	40
98845	2A TP C UNO PLUS MCB	1826	4	7304	40
98846	3A TP C UNO PLUS MCB	1826	4	7304	40
98847	4A TP C UNO PLUS MCB	1826	4	7304	40
98848	5A TP C UNO PLUS MCB	1826	4	7304	40
98849	6A TP C UNO PLUS MCB	1698	4	6792	40
98850	10A TP C UNO PLUS MCB	1698	4	6792	40
98851	16A TP C UNO PLUS MCB	1698	4	6792	40
98852	20A TP C UNO PLUS MCB	1698	4	6792	40
98853	25A TP C UNO PLUS MCB	1698	4	6792	40
98854	32A TP C UNO PLUS MCB	1698	4	6792	40
98855	40A TP C UNO PLUS MCB	2695	4	10780	40
98856	63A TP C UNO PLUS MCB	2915	4	11660	40
<b>UNO PLUS MCB - TPN</b>		<b>HSN Code : 85362030</b>			
98857	0.5A TPN C UNO PLUS MCB	2430	3	7290	30
98858	1A TPN C UNO PLUS MCB	2430	3	7290	30
98859	2A TPN C UNO PLUS MCB	2430	3	7290	30
98860	3A TPN C UNO PLUS MCB	2430	3	7290	30
98861	4A TPN C UNO PLUS MCB	2430	3	7290	30
98862	5A TPN C UNO PLUS MCB	2430	3	7290	30
98863	6A TPN C UNO PLUS MCB	2162	3	6486	30
98864	10A TPN C UNO PLUS MCB	2162	3	6486	30
98865	16A TPN C UNO PLUS MCB	2162	3	6486	30
98866	20A TPN C UNO PLUS MCB	2162	3	6486	30
98867	25A TPN C UNO PLUS MCB	2162	3	6486	30
98868	32A TPN C UNO PLUS MCB	2162	3	6486	30
98869	40A TPN C UNO PLUS MCB	3119	3	9357	30
98870	63A TPN C UNO PLUS MCB	3242	3	9726	30
<b>UNO PLUS MCB - FP</b>		<b>HSN Code : 85362030</b>			
98871	0.5A FP C UNO PLUS MCB	2610	3	7830	30
98872	1A FP C UNO PLUS MCB	2610	3	7830	30
98873	2A FP C UNO PLUS MCB	2610	3	7830	30
98874	3A FP C UNO PLUS MCB	2610	3	7830	30
98875	4A FP C UNO PLUS MCB	2610	3	7830	30
98876	5A FP C UNO PLUS MCB	2610	3	7830	30
98877	6A FP C UNO PLUS MCB	2391	3	7173	30
98878	10A FP C UNO PLUS MCB	2391	3	7173	30
98879	16A FP C UNO PLUS MCB	2391	3	7173	30
98880	20A FP C UNO PLUS MCB	2391	3	7173	30
98881	25A FP C UNO PLUS MCB	2391	3	7173	30
98882	32A FP C UNO PLUS MCB	2391	3	7173	30
98883	40A FP C UNO PLUS MCB	3254	3	9762	30
98884	63A FP C UNO PLUS MCB	3461	3	10383	30

# ISOLATOR / COS

CODE	DESCRIPTION	Unit Sale Price Rs. per number	Standard Packing Quantity (Number)	Maximum Retail Price of Standard Packing (Inclusive of all taxes) Rs.	Units in Master Packing (Number) Wholesale Pack
<b>DP ISOLATOR</b>		<b>HSN Code : 85362030</b>			
98054	32A DP UNO ISOLATOR	620	6	3720	60
98055	40A DP UNO ISOLATOR	630	6	3780	60
98056	63A DP UNO ISOLATOR	810	6	4860	60
98095	100A DP UNO ISOLATOR	1035	6	6210	60
98096	125A DP UNO ISOLATOR	1050	6	6300	60
<b>TP ISOLATOR</b>		<b>HSN Code : 85362030</b>			
98059	40A TP UNO ISOLATOR	925	4	3700	40
98060	63A TP UNO ISOLATOR	1140	4	4560	40
98097	100A TP UNO ISOLATOR	1540	4	6160	40
98098	125A TP UNO ISOLATOR	1550	4	6200	40
<b>FP ISOLATOR</b>		<b>HSN Code : 85362030</b>			
98063	40A FP UNO ISOLATOR	1386	3	4158	30
98064	63A FP UNO ISOLATOR	1782	3	5346	30
98099	100A FP UNO ISOLATOR	2277	3	6831	30
98100	125A FP UNO ISOLATOR	2310	3	6930	30
<b>DP MODULAR CHANGEOVER SWITCH</b>		<b>HSN Code : 85362030</b>			
98081	25A DP UNO MCO	1310	6	7860	60
98082	32A DP UNO MCO	1650	6	9900	60
98083	40A DP UNO MCO	1980	6	11880	60
98084	63A DP UNO MCO	2525	6	15150	60
<b>FP MODULAR CHANGEOVER SWITCH</b>		<b>HSN Code : 85362030</b>			
98085	25A FP UNO MCO	2655	3	7965	30
98086	32A FP UNO MCO	3285	3	9855	30
98087	40A FP UNO MCO	4015	3	12045	30
98088	63A FP UNO MCO	4845	3	14535	30



# UNO PLUS ISOLATOR

CODE	DESCRIPTION	Unit Sale Price Rs. per number	Standard Packing Quantity (Number)	Maximum Retail Price of Standard Packing (Inclusive of all taxes) Rs.	Units in Master Packing (Number) Wholesale Pack
<b>DP ISOLATOR</b>		<b>HSN Code : 85362030</b>			
98937	32A DP UNO PLUS ISOLATOR	<b>689</b>	6	4134	60
98938	40A DP UNO PLUS ISOLATOR	<b>701</b>	6	4206	60
98939	63A DP UNO PLUS ISOLATOR	<b>899</b>	6	5394	60
98940	100A DP UNO PLUS ISOLATOR	<b>1150</b>	6	6900	60
<b>TP ISOLATOR</b>		<b>HSN Code : 85362030</b>			
98942	40A TP UNO PLUS ISOLATOR	<b>1025</b>	4	4100	40
98943	63A TP UNO PLUS ISOLATOR	<b>1264</b>	4	5056	40
98944	100A TP UNO PLUS ISOLATOR	<b>1708</b>	4	6832	40
<b>FP ISOLATOR</b>		<b>HSN Code : 85362030</b>			
98946	40A FP UNO PLUS ISOLATOR	<b>1408</b>	3	4224	30
98947	63A FP UNO PLUS ISOLATOR	<b>1636</b>	3	4908	30
98948	100A FP UNO PLUS ISOLATOR	<b>2085</b>	3	6255	30



# ACCL

CODE

DESCRIPTION

Unit Sale Price  
Rs. per number

Standard Packing Quantity  
(Number)

Maximum Retail Price of Standard Packing  
(Inclusive of all taxes) Rs.

Units in Master Packing  
(Number)  
Wholesale Pack

## UNO AUTOMATIC CHANGOVER (ACCL) - SPN

HSN Code : 85362030



98600	30/0.5A UNO SPN ACCL	3400	1	3400	18
98601	30/1.0A UNO SPN ACCL	3400	1	3400	18
98602	30/1.5A UNO SPN ACCL	3400	1	3400	18
98603	30/2.5A UNO SPN ACCL	3400	1	3400	18
98604	30/03A UNO SPN ACCL	3400	1	3400	18
98605	30/04A UNO SPN ACCL	3400	1	3400	18
98606	30/05A UNO SPN ACCL	3400	1	3400	18
98607	30/06A UNO SPN ACCL	3400	1	3400	18
98608	30/09A UNO SPN ACCL	3400	1	3400	18
98612	30/10A UNO SPN ACCL	3400	1	3400	18
98609	30/12A UNO SPN ACCL	3400	1	3400	18
98610	30/15A UNO SPN ACCL	3400	1	3400	18
98611	30/20A UNO SPN ACCL	3400	1	3400	18
98613	30/25A UNO SPN ACCL	3400	1	3400	18
98614	30/30A UNO SPN ACCL	3400	1	3400	18

## UNO AUTOMATIC CHANGOVER (ACCL) - TPN

HSN Code : 85362030



98615	40A/6A UNO TPN/SPN ACCL	18265	1	18265	4
98616	40A/10A UNO TPN/SPN ACCL	18265	1	18265	4
98617	40A/16A UNO TPN/SPN ACCL	18265	1	18265	4
98618	40A/20A UNO TPN/SPN ACCL	18265	1	18265	4
98619	40A/25A UNO TPN/SPN ACCL	18265	1	18265	4
98620	40A/32A UNO TPN/SPN ACCL	18265	1	18265	4
98621	40A/40A UNO TPN/SPN ACCL	18265	1	18265	4
98630	40A/6A UNO TPN/TPN ACCL	22640	1	22640	4
98631	40A/10A UNO TPN/TPN ACCL	22640	1	22640	4
98632	40A/16A UNO TPN/TPN ACCL	22640	1	22640	4
98633	40A/20A UNO TPN/TPN ACCL	22640	1	22640	4
98634	40A/25A UNO TPN/TPN ACCL	22640	1	22640	4
98635	40A/32A UNO TPN/TPN ACCL	22640	1	22640	4
98636	40A/40A UNO TPN/TPN ACCL	22640	1	22640	4

# UNO RCCB

CODE	DESCRIPTION	Unit Sale Price Rs. per number	Standard Packing Quantity (Number)	Maximum Retail Price of Standard Packing (Inclusive of all taxes) Rs.	Units in Master Packing (Number) Wholesale Pack
<b>HIGHER RATING RCCB</b>		<b>HSN Code : 85362030</b>			
98201	25A DP 30mA UNO RCCB	3581	5	17905	30
98202	25A DP 100mA UNO RCCB	3494	5	17470	30
98203	25A DP 300mA UNO RCCB	3494	5	17470	30
98207	40A DP 30mA UNO RCCB	3568	5	17840	30
98208	40A DP 100mA UNO RCCB	3581	5	17905	30
98209	40A DP 300mA UNO RCCB	3581	5	17905	30
98210	63A DP 30mA UNO RCCB	5115	5	25575	30
98211	63A DP 100mA UNO RCCB	5028	5	25140	30
98212	63A DP 300mA UNO RCCB	5028	5	25140	30
98213	25A FP 30mA UNO RCCB	4744	4	18976	16
98214	25A FP 100mA UNO RCCB	4564	4	18256	16
98215	25A FP 300mA UNO RCCB	4564	4	18256	16
98219	40A FP 30mA UNO RCCB	4719	4	18876	16
98220	40A FP 100mA UNO RCCB	4575	4	18300	16
98221	40A FP 300mA UNO RCCB	4575	4	18300	16
98222	63A FP 30mA UNO RCCB	5186	4	20744	16
98223	63A FP 100mA UNO RCCB	5104	4	20416	16
98224	63A FP 300mA UNO RCCB	5104	4	20416	16
<b>HIGHER RATING (HR) RCCB</b>		<b>HSN Code : 85362030</b>			
98500	80A DP 30mA UNO RCCB	7703	5	38515	30
98501	80A DP 100mA UNO RCCB	7703	5	38515	30
98502	80A DP 300mA UNO RCCB	7703	5	38515	30
98503	100A DP 30mA UNO RCCB	7839	5	39195	30
98504	100A DP 100mA UNO RCCB	7839	5	39195	30
98505	100A DP 300mA UNO RCCB	7839	5	39195	30
98506	80A FP 30mA UNO RCCB	8347	4	33388	16
98507	80A FP 100mA UNO RCCB	8347	4	33388	16
98508	80A FP 300mA UNO RCCB	8347	4	33388	16
98509	100A FP 30mA UNO RCCB	8554	4	34216	16
98510	100A FP 100mA UNO RCCB	8554	4	34216	16
98511	100A FP 300mA UNO RCCB	8554	4	34216	16



# UNO PLUS RCCB

CODE

DESCRIPTION

Unit Sale  
Price  
Rs. per  
number

Standard  
Packing  
Quantity  
(Number)

Maximum  
Retail Price  
of Standard  
Packing  
(Inclusive of  
all taxes) Rs.

Units in  
Master  
Packing  
(Number)  
Wholesale  
Pack

## UNO PLUS RCCB - DP

HSN Code : 85362030



98901	25A DP 30mA UNO PLUS RCCB	4061	5	20305	30
98902	25A DP 100mA UNO PLUS RCCB	3980	5	19900	30
98903	25A DP 300mA UNO PLUS RCCB	3980	5	19900	30
98904	32A DP 30mA UNO PLUS RCCB	4061	5	20305	30
98905	32A DP 100mA UNO PLUS RCCB	3980	5	19900	30
98906	32A DP 300mA UNO PLUS RCCB	3980	5	19900	30
98907	40A DP 30mA UNO PLUS RCCB	4113	5	20565	30
98908	40A DP 100mA UNO PLUS RCCB	4107	5	20535	30
98909	40A DP 300mA UNO PLUS RCCB	4107	5	20535	30
98910	63A DP 30mA UNO PLUS RCCB	5837	5	29185	30
98911	63A DP 100mA UNO PLUS RCCB	5699	5	28495	30
98912	63A DP 300mA UNO PLUS RCCB	5699	5	28495	30

## UNO PLUS RCCB - FP

HSN Code : 85362030

98913	25A FP 30mA UNO PLUS RCCB	5353	4	21412	16
98914	25A FP 100mA UNO PLUS RCCB	5214	4	20856	16
98915	25A FP 300mA UNO PLUS RCCB	5214	4	20856	16
98916	32A FP 30mA UNO PLUS RCCB	5353	4	21412	16
98917	32A FP 100mA UNO PLUS RCCB	5214	4	20856	16
98918	32A FP 300mA UNO PLUS RCCB	5214	4	20856	16
98919	40A FP 30mA UNO PLUS RCCB	5352	4	21408	16
98920	40A FP 100mA UNO PLUS RCCB	5243	4	20972	16
98921	40A FP 300mA UNO PLUS RCCB	5243	4	20972	16
98922	63A FP 30mA UNO PLUS RCCB	5958	4	23832	16
98923	63A FP 100mA UNO PLUS RCCB	5953	4	23812	16
98924	63A FP 300mA UNO PLUS RCCB	5953	4	23812	16



AC BOX / COS Enklozr / GUARD	CODE	DESCRIPTION	Unit Sale Price Rs. per number	Standard Packing Quantity (Number)	Maximum Retail Price of Standard Packing (Inclusive of all taxes) Rs.	Units in Master Packing (Number) Wholesale Pack
<b>MODULAR AC BOX WITH MINI MCB</b>			<b>HSN Code : 85371000</b>			
	98488	3 MODULE MODULAR AC BOX 20A SP MCB WITH PLASTIC ENCLOSURE & PLUG TOP	1071	30	32130	-
	98489	3 MODULE MODULAR SURFACE AC BOX 20A SP MCB & PLUG TOP WITHOUT ENCLOSURE	917	30	27510	-
	98491	4 MODULE MODULAR AC BOX 20A SP MCB WITH METAL ENCLOSURE & PLUG TOP	1145	20	22900	-
	98492	4 MODULE MODULAR AC BOX 20A DP MCB WITH METAL ENCLOSURE & PLUG TOP	1410	20	28200	-
	98496	3 MODULE MODULAR AC BOX 25A SP MCB WITH PLASTIC ENCLOSURE & PLUG TOP	1071	16	17136	-
	98497	3 MODULE MODULAR AC BOX 25A SP MCB WITH PLUG TOP WITHOUT ENCLOSURE	917	16	14672	-
	98498	4 MODULE MODULAR AC BOX 25A SP MCB WITH METAL ENCLOSURE & PLUG TOP	1140	12	13680	-
	98499	4 MODULE MODULAR AC BOX 25A SP MCB WITH PLUG TOP W/O ENCLOSURE	981	12	11772	-
<b>UNO MODULAR CHANGEOVER SWITCH enklozr</b>			<b>HSN Code : 85362030</b>			
	98081ENK	25 A DP UNO MCO enklozr	2300	6	13800	
	98082ENK	32 A DP UNO MCO enklozr	2505	6	15030	
	98083ENK	40 A DP UNO MCO enklozr	2690	6	16140	
	98084ENK	63 A DP UNO MCO enklozr	2980	6	17880	
	98085ENK	25 A FP UNO MCO enklozr	3305	6	19830	
	98086ENK	32 A FP UNO MCO enklozr	4190	6	25140	
	98087ENK	40 A FP UNO MCO enklozr	5060	6	30360	
	98088ENK	63 A FP UNO MCO enklozr	5430	6	32580	
<b>UNO GUARD - MINI DP MCB WITH ENCLOSURE</b>			<b>HSN Code : 85362030</b>			
	98494	20A DP UNO MINI MCB WITH ENCLOSURE	690	1	690	24
	98495	32A DP UNO MINI MCB WITH ENCLOSURE	690	1	690	24
	98493	UNO GUARD MINI 06 DP MCB WITH ENCLOSURE	690	1	690	24

# MINI MCB

CODE	DESCRIPTION	Unit Sale Price Rs. per number	Standard Packing Quantity (Number)	Maximum Retail Price of Standard Packing (Inclusive of all taxes) Rs.	Units in Master Packing (Number) Wholesale Pack
<b>ROMA CLASSIC, RIDER, REGENT - MINI MODULAR SP MCB (WHITE)</b>			<b>HSN Code : 85362030</b>		
98069	6A SP 'C' MINI MCB	365	12	4380	144
98070	10A SP 'C' MINI MCB	365	12	4380	144
98071	16A SP 'C' MINI MCB	365	12	4380	144
98072	20A SP 'C' MINI MCB	365	12	4380	144
98073	25A SP 'C' MINI MCB	365	12	4380	144
98074	32A SP 'C' MINI MCB	365	12	4380	144
<b>ROMA CLASSIC, RIDER, REGENT - MINI MODULAR DP MCB (WHITE)</b>			<b>HSN Code : 85362030</b>		
98075	6A DP 'C' MINI MCB	790	6	4740	72
98076	10A DP 'C' MINI MCB	790	6	4740	72
98077	16A DP 'C' MINI MCB	790	6	4740	72
98078	20A DP 'C' MINI MCB	790	6	4740	72
98079	25A DP 'C' MINI MCB	790	6	4740	72
98080	32A DP 'C' MINI MCB	790	6	4740	72
<b>ROMA CLASSIC, RIDER, REGENT - MINI MODULAR SP MCB (MATT BLACK)</b>			<b>HSN Code : 85362030</b>		
98069MB	6A SP 'C' MINI MCB	395	12	4740	144
98070MB	10A SP 'C' MINI MCB	395	12	4740	144
98071MB	16A SP 'C' MINI MCB	395	12	4740	144
98072MB	20A SP 'C' MINI MCB	395	12	4740	144
98073MB	25A SP 'C' MINI MCB	395	12	4740	144
98074MB	32A SP 'C' MINI MCB	395	12	4740	144
<b>ROMA CLASSIC, RIDER, REGENT - MINI MODULAR DP MCB (MATT BLACK)</b>			<b>HSN Code : 85362030</b>		
98075MB	6A DP 'C' MINI MCB	860	6	5160	72
98076MB	10A DP 'C' MINI MCB	860	6	5160	72
98077MB	16A DP 'C' MINI MCB	860	6	5160	72
98078MB	20A DP 'C' MINI MCB	860	6	5160	72
98079MB	25A DP 'C' MINI MCB	860	6	5160	72
98080MB	32A DP 'C' MINI MCB	860	6	5160	72



# MINI MCB

CODE	DESCRIPTION	Unit Sale Price Rs. per number	Standard Packing Quantity (Number)	Maximum Retail Price of Standard Packing (Inclusive of all taxes) Rs.	Units in Master Packing (Number) Wholesale Pack
<b>ROMA URBAN - MINI MODULAR SP MCB (WHITE)</b>		<b>HSN Code : 85362030</b>			
66151	6A SP 'C' MINI MCB	385	12	4620	144
66152	10A SP 'C' MINI MCB	385	12	4620	144
66153	16A SP 'C' MINI MCB	385	12	4620	144
66154	20A SP 'C' MINI MCB	385	12	4620	144
66155	25A SP 'C' MINI MCB	385	12	4620	144
66156	32A SP 'C' MINI MCB	385	12	4620	144
<b>ROMA URBAN - MINI MODULAR DP MCB (WHITE)</b>		<b>HSN Code : 85362030</b>			
66157	6A DP 'C' MINI MCB	840	6	5040	72
66158	10A DP 'C' MINI MCB	840	6	5040	72
66159	16A DP 'C' MINI MCB	840	6	5040	72
66160	20A DP 'C' MINI MCB	840	6	5040	72
66161	25A DP 'C' MINI MCB	840	6	5040	72
66162	32A DP 'C' MINI MCB	840	6	5040	72
<b>ROMA URBAN - MINI MODULAR SP MCB (SILVER)</b>		<b>HSN Code : 85362030</b>			
66151S	6A SP 'C' MINI MCB	420	12	5040	144
66152S	10A SP 'C' MINI MCB	420	12	5040	144
66153S	16A SP 'C' MINI MCB	420	12	5040	144
66154S	20A SP 'C' MINI MCB	420	12	5040	144
66155S	25A SP 'C' MINI MCB	420	12	5040	144
66156S	32A SP 'C' MINI MCB	420	12	5040	144
<b>ROMA URBAN - MINI MODULAR DP MCB (SILVER)</b>		<b>HSN Code : 85362030</b>			
66157S	6A DP 'C' MINI MCB	895	6	5370	72
66158S	10A DP 'C' MINI MCB	895	6	5370	72
66159S	16A DP 'C' MINI MCB	895	6	5370	72
66160S	20A DP 'C' MINI MCB	895	6	5370	72
66161S	25A DP 'C' MINI MCB	895	6	5370	72
66162S	32A DP 'C' MINI MCB	895	6	5370	72



# MINI MCB

CODE	DESCRIPTION	Unit Sale Price Rs. per number	Standard Packing Quantity (Number)	Maximum Retail Price of Standard Packing (Inclusive of all taxes) Rs.	Units in Master Packing (Number) Wholesale Pack
<b>ROMA URBAN - MINI MODULAR SP MCB (BLACK)</b>		<b>HSN Code : 85362030</b>			
66151B	6A SP 'C' MINI MCB	420	12	5040	144
66152B	10A SP 'C' MINI MCB	420	12	5040	144
66153B	16A SP 'C' MINI MCB	420	12	5040	144
66154B	20A SP 'C' MINI MCB	420	12	5040	144
66155B	25A SP 'C' MINI MCB	420	12	5040	144
66156B	32A SP 'C' MINI MCB	420	12	5040	144
<b>ROMA URBAN - MINI MODULAR DP MCB (BLACK)</b>		<b>HSN Code : 85362030</b>			
66157B	6A DP 'C' MINI MCB	895	6	5370	72
66158B	10A DP 'C' MINI MCB	895	6	5370	72
66159B	16A DP 'C' MINI MCB	895	6	5370	72
66160B	20A DP 'C' MINI MCB	895	6	5370	72
66161B	25A DP 'C' MINI MCB	895	6	5370	72
66162B	32A DP 'C' MINI MCB	895	6	5370	72
<b>ROMA URBAN - MINI MODULAR SP MCB (GRAPHITE BLACK)</b>		<b>HSN Code : 85362030</b>			
66151GB	6A SP 'C' MINI MCB	420	12	5040	144
66152GB	10A SP 'C' MINI MCB	420	12	5040	144
66153GB	16A SP 'C' MINI MCB	420	12	5040	144
66154GB	20A SP 'C' MINI MCB	420	12	5040	144
66155GB	25A SP 'C' MINI MCB	420	12	5040	144
66156GB	32A SP 'C' MINI MCB	420	12	5040	144
<b>ROMA URBAN - MINI MODULAR DP MCB (GRAPHITE BLACK)</b>		<b>HSN Code : 85362030</b>			
66157GB	6A DP 'C' MINI MCB	895	6	5370	72
66158GB	10A DP 'C' MINI MCB	895	6	5370	72
66159GB	16A DP 'C' MINI MCB	895	6	5370	72
66160GB	20A DP 'C' MINI MCB	895	6	5370	72
66161GB	25A DP 'C' MINI MCB	895	6	5370	72
66162GB	32A DP 'C' MINI MCB	895	6	5370	72



# MINI MCB

CODE	DESCRIPTION	Unit Sale Price Rs. per number	Standard Packing Quantity (Number)	Maximum Retail Price of Standard Packing (Inclusive of all taxes) Rs.	Units in Master Packing (Number) Wholesale Pack
<b>PENTA MODULAR - MINI MODULAR SP MCB (WHITE)</b>		<b>HSN Code : 85362030</b>			
65980	6A SP 'C' MINI MCB	365	12	4380	144
65981	10A SP 'C' MINI MCB	365	12	4380	144
65982	16A SP 'C' MINI MCB	365	12	4380	144
65983	20A SP 'C' MINI MCB	365	12	4380	144
65984	25A SP 'C' MINI MCB	365	12	4380	144
65985	32A SP 'C' MINI MCB	365	12	4380	144
<b>PENTA MODULAR - MINI MODULAR DP MCB (WHITE)</b>		<b>HSN Code : 85362030</b>			
65989	6A DP 'C' MINI MCB	790	6	4740	72
65990	10A DP 'C' MINI MCB	790	6	4740	72
65991	16A DP 'C' MINI MCB	790	6	4740	72
65992	20A DP 'C' MINI MCB	790	6	4740	72
65993	25A DP 'C' MINI MCB	790	6	4740	72
65994	32A DP 'C' MINI MCB	790	6	4740	72
<b>PENTA MODULAR - MINI MODULAR SP MCB (GRAPHITE BLACK)</b>		<b>HSN Code : 85362030</b>			
65980GB	6A SP 'C' MINI MCB	395	12	4740	144
65981GB	10A SP 'C' MINI MCB	395	12	4740	144
65982GB	16A SP 'C' MINI MCB	395	12	4740	144
65983GB	20A SP 'C' MINI MCB	395	12	4740	144
65984GB	25A SP 'C' MINI MCB	395	12	4740	144
65985GB	32A SP 'C' MINI MCB	395	12	4740	144
<b>PENTA MODULAR - MINI MODULAR DP MCB (GRAPHITE BLACK)</b>		<b>HSN Code : 85362030</b>			
65989GB	6A DP 'C' MINI MCB	860	6	5160	72
65990GB	10A DP 'C' MINI MCB	860	6	5160	72
65991GB	16A DP 'C' MINI MCB	860	6	5160	72
65992GB	20A DP 'C' MINI MCB	860	6	5160	72
65993GB	25A DP 'C' MINI MCB	860	6	5160	72
65994GB	32A DP 'C' MINI MCB	860	6	5160	72



# MINI MCB

CODE	DESCRIPTION	Unit Sale Price Rs. per number	Standard Packing Quantity (Number)	Maximum Retail Price of Standard Packing (Inclusive of all taxes) Rs.	Units in Master Packing (Number) Wholesale Pack
<b>ZIVA - MINI MODULAR SP MCB (WHITE)</b>		<b>HSN Code : 85362030</b>			
68980	6A SP 'C' MINI MCB	365	12	4380	144
68981	10A SP 'C' MINI MCB	365	12	4380	144
68982	16A SP 'C' MINI MCB	365	12	4380	144
68983	20A SP 'C' MINI MCB	365	12	4380	144
68984	25A SP 'C' MINI MCB	365	12	4380	144
68985	32A SP 'C' MINI MCB	365	12	4380	144
<b>ZIVA - MINI MODULAR DP MCB (WHITE)</b>		<b>HSN Code : 85362030</b>			
68989	6A DP 'C' MINI MCB	795	6	4770	72
68990	10A DP 'C' MINI MCB	795	6	4770	72
68991	16A DP 'C' MINI MCB	795	6	4770	72
68992	20A DP 'C' MINI MCB	795	6	4770	72
68993	25A DP 'C' MINI MCB	795	6	4770	72
68994	32A DP 'C' MINI MCB	795	6	4770	72
<b>ZIVA - MINI MODULAR SP MCB (BLACK)</b>		<b>HSN Code : 85362030</b>			
68980B	6A SP 'C' MINI MCB	395	12	4740	144
68981B	10A SP 'C' MINI MCB	395	12	4740	144
68982B	16A SP 'C' MINI MCB	395	12	4740	144
68983B	20A SP 'C' MINI MCB	395	12	4740	144
68984B	25A SP 'C' MINI MCB	395	12	4740	144
68985B	32A SP 'C' MINI MCB	395	12	4740	144
<b>ZIVA - MINI MODULAR DP MCB (BLACK)</b>		<b>HSN Code : 85362030</b>			
68989B	6A DP 'C' MINI MCB	860	6	5160	72
68990B	10A DP 'C' MINI MCB	860	6	5160	72
68991B	16A DP 'C' MINI MCB	860	6	5160	72
68992B	20A DP 'C' MINI MCB	860	6	5160	72
68993B	25A DP 'C' MINI MCB	860	6	5160	72
68994B	32A DP 'C' MINI MCB	860	6	5160	72



# MINI MCB

CODE	DESCRIPTION	Unit Sale Price Rs. per number	Standard Packing Quantity (Number)	Maximum Retail Price of Standard Packing (Inclusive of all taxes) Rs.	Units in Master Packing (Number) Wholesale Pack
<b>RIDER - MINI MODULAR SP MCB (WHITE)</b>		<b>HSN Code : 85362030</b>			
47106	6A SP 'C' MINI MCB	365	12	4380	144
47107	10A SP 'C' MINI MCB	365	12	4380	144
47108	16A SP 'C' MINI MCB	365	12	4380	144
47109	20A SP 'C' MINI MCB	365	12	4380	144
47110	25A SP 'C' MINI MCB	365	12	4380	144
47111	32A SP 'C' MINI MCB	365	12	4380	144
<b>RIDER - MINI MODULAR DP MCB (WHITE)</b>		<b>HSN Code : 85362030</b>			
47112	6A DP 'C' MINI MCB	790	6	4740	72
47113	10A DP 'C' MINI MCB	790	6	4740	72
47114	16A DP 'C' MINI MCB	790	6	4740	72
47115	20A DP 'C' MINI MCB	790	6	4740	72
47116	25A DP 'C' MINI MCB	790	6	4740	72
47117	32A DP 'C' MINI MCB	790	6	4740	72
<b>RIDER - MINI MODULAR SP MCB (GRAPHITE BLACK)</b>		<b>HSN Code : 85362030</b>			
47106GB	6A SP 'C' MINI MCB	395	12	4740	144
47107GB	10A SP 'C' MINI MCB	395	12	4740	144
47108GB	16A SP 'C' MINI MCB	395	12	4740	144
47109GB	20A SP 'C' MINI MCB	395	12	4740	144
47110GB	25A SP 'C' MINI MCB	395	12	4740	144
47111GB	32A SP 'C' MINI MCB	395	12	4740	144
<b>RIDER - MINI MODULAR DP MCB (GRAPHITE BLACK)</b>		<b>HSN Code : 85362030</b>			
47112GB	6A DP 'C' MINI MCB	860	6	5160	72
47113GB	10A DP 'C' MINI MCB	860	6	5160	72
47114GB	16A DP 'C' MINI MCB	860	6	5160	72
47115GB	20A DP 'C' MINI MCB	860	6	5160	72
47116GB	25A DP 'C' MINI MCB	860	6	5160	72
47117GB	32A DP 'C' MINI MCB	860	6	5160	72



# MINI MCB

CODE	DESCRIPTION	Unit Sale Price Rs. per number	Standard Packing Quantity (Number)	Maximum Retail Price of Standard Packing (Inclusive of all taxes) Rs.	Units in Master Packing (Number) Wholesale Pack
<b>TIONA - MINI MODULAR SP MCB (WHITE)</b>		<b>HSN Code : 85362030</b>			
86151	6A SP 'C' MINI MCB	365	12	4380	144
86152	10A SP 'C' MINI MCB	365	12	4380	144
86153	16A SP 'C' MINI MCB	365	12	4380	144
86154	20A SP 'C' MINI MCB	365	12	4380	144
86155	25A SP 'C' MINI MCB	365	12	4380	144
86156	32A SP 'C' MINI MCB	365	12	4380	144
<b>TIONA - MINI MODULAR DP MCB (WHITE)</b>		<b>HSN Code : 85362030</b>			
86157	6A DP 'C' MINI MCB	790	6	4740	72
86158	10A DP 'C' MINI MCB	790	6	4740	72
86159	16A DP 'C' MINI MCB	790	6	4740	72
86160	20A DP 'C' MINI MCB	790	6	4740	72
86161	25A DP 'C' MINI MCB	790	6	4740	72
86162	32A DP 'C' MINI MCB	790	6	4740	72
<b>TIONA - MINI MODULAR SP MCB (BLACK)</b>		<b>HSN Code : 85362030</b>			
86151B	6A SP 'C' MINI MCB	395	12	4740	144
86152B	10A SP 'C' MINI MCB	395	12	4740	144
86153B	16A SP 'C' MINI MCB	395	12	4740	144
86154B	20A SP 'C' MINI MCB	395	12	4740	144
86155B	25A SP 'C' MINI MCB	395	12	4740	144
86156B	32A SP 'C' MINI MCB	395	12	4740	144
<b>TIONA - MINI MODULAR DP MCB (BLACK)</b>		<b>HSN Code : 85362030</b>			
86157B	6A DP 'C' MINI MCB	860	6	5160	72
86158B	10A DP 'C' MINI MCB	860	6	5160	72
86159B	16A DP 'C' MINI MCB	860	6	5160	72
86160B	20A DP 'C' MINI MCB	860	6	5160	72
86161B	25A DP 'C' MINI MCB	860	6	5160	72
86162B	32A DP 'C' MINI MCB	860	6	5160	72



# MINI MCB

CODE	DESCRIPTION	Unit Sale Price Rs. per number	Standard Packing Quantity (Number)	Maximum Retail Price of Standard Packing (Inclusive of all taxes) Rs.	Units in Master Packing (Number) Wholesale Pack
<b>ROMA PLUS - MINI MODULAR SP MCB (WHITE)</b>		<b>HSN Code : 85362030</b>			
89980	6A SP 'C' MINI MCB	365	12	4380	144
89981	10A SP 'C' MINI MCB	365	12	4380	144
89982	16A SP 'C' MINI MCB	365	12	4380	144
89983	20A SP 'C' MINI MCB	365	12	4380	144
89984	25A SP 'C' MINI MCB	365	12	4380	144
89985	32A SP 'C' MINI MCB	365	12	4380	144
<b>ROMA PLUS - MINI MODULAR DP MCB (WHITE)</b>		<b>HSN Code : 85362030</b>			
89986	6A DP 'C' MINI MCB	790	6	4740	72
89987	10A DP 'C' MINI MCB	790	6	4740	72
89988	16A DP 'C' MINI MCB	790	6	4740	72
89989	20A DP 'C' MINI MCB	790	6	4740	72
89990	25A DP 'C' MINI MCB	790	6	4740	72
89991	32A DP 'C' MINI MCB	790	6	4740	72
<b>SCREW TYPE MINI MCB (WHITE)</b>		<b>HSN Code : 85362030</b>			
98236	6A SP 'C' MINI MCB	365	12	4380	120
98237	10A SP 'C' MINI MCB	365	12	4380	120
98238	16A SP 'C' MINI MCB	365	12	4380	120
98239	20A SP 'C' MINI MCB	365	12	4380	120
98240	25A SP 'C' MINI MCB	365	12	4380	120
98241	32A SP 'C' MINI MCB	365	12	4380	120
<b>SCREW TYPE MINI MCB (WHITE)</b>		<b>HSN Code : 85362030</b>			
98246	6A DP 'C' MINI MCB	790	6	4740	60
98247	10A DP 'C' MINI MCB	790	6	4740	60
98248	16A DP 'C' MINI MCB	790	6	4740	60
98249	20A DP 'C' MINI MCB	790	6	4740	60
98250	25A DP 'C' MINI MCB	790	6	4740	60
98251	32A DP 'C' MINI MCB	790	6	4740	60



# UNO DB

CODE	DESCRIPTION	No. of Ways	Incomer + Outgoing	Unit Sale Price Rs. per number	Standard Packing Quantity (Number)	Maximum Retail Price of Standard Packing (Inclusive of all taxes) Rs.
<b>SHEET METAL &amp; PLASTIC ENCLOSURES W/O MCB</b>				<b>HSN Code : 85371000</b>		
98292	1 & 2 Pole Sheet Metal Enc	-	1/2	519	40	20760
98294	3 & 4 Pole Sheet Metal Enc	-	3/4	594	24	14256
18980	1 & 2 Pole Plastic Enc	-	1/2	122	10	1220
18990	3 & 4 Pole Plastic Enc	-	3/4	186	5	930
<b>ORNET PLUS DB</b>				<b>HSN Code : 85371000</b>		
98371	6 Way UNO Ornet Plus DB	6	2+4	1903	6	11418
98372	8 Way UNO Ornet Plus DB	8	2+6	1956	6	11736
98373	10 Way UNO Ornet Plus DB	10	2+8	2422	6	14532
98374	12 Way UNO Ornet Plus DB	12	2+10	2486	6	14916
<b>SPN METAL DOUBLE DOOR DB</b>				<b>HSN Code : 85371000</b>		
98300	4 WAY SPN UNO DB	4	2+2	1892	6	11352
98301	6 WAY SPN UNO DB	6	2+4	2247	6	13482
98302	8 WAY SPN UNO DB	8	2+6	2475	6	14850
98303	12 WAY SPN UNO DB	12	2+10	3069	4	12276
98304	16 WAY SPN UNO DB	16	2+14	4123	4	16492
<b>TPN METAL DOUBLE DOOR DB</b>				<b>HSN Code : 85371000</b>		
98305	4 WAY TPN UNO DB	4	8+12	5014	1	5014
98306	6 WAY TPN UNO DB	6	8+18	6296	1	6296
98307	8 WAY TPN UNO DB	8	8+24	8162	1	8162
98308	12 WAY TPN UNO DB	12	8+36	12132	1	12132



# UNO DB

CODE	DESCRIPTION	No. of Ways	Incomer + Outgoing	Unit Sale Price Rs. per number	Standard Packing Quantity (Number)	Maximum Retail Price of Standard Packing (Inclusive of all taxes) Rs.
<b>SPN ACRYLIC DOUBLE DOOR DB</b>				<b>HSN Code : 85371000</b>		
98309	6 WAY SPN ACRYLIC UNO DB	6	2+4	2661	1	2661
98310	8 WAY SPN ACRYLIC UNO DB	8	2+6	2968	1	2968
98311	12 WAY SPN ACRYLIC UNO DB	12	2+10	3673	1	3673
98312	16 WAY SPN ACRYLIC UNO DB	16	2+14	4918	1	4918
<b>TPN ACRYLIC DOUBLE DOOR DB</b>				<b>HSN Code : 85371000</b>		
98313	4 WAY TPN ACRYLIC UNO DB	4	8+12	6487	1	6487
98314	6 WAY TPN ACRYLIC UNO DB	6	8+18	8151	1	8151
98315	8 WAY TPN ACRYLIC UNO DB	8	8+24	10579	1	10579
<b>TPN VERTICAL DOUBLE DOOR DB</b>				<b>HSN Code : 85371000</b>		
98317	4 WAY TPN VERTICAL	4	8+12	13324	1	13324
98318	6 WAY TPN VERTICAL	6	8+18	15068	1	15068
98319	8 WAY TPN VERTICAL	8	8+24	16817	1	16817
98320	12 WAY TPN VERTICAL	12	8+36	21825	1	21825
<b>VERTICAL PER PHASE ISOLATION DOUBLE DOOR DB</b>				<b>HSN Code : 85371000</b>		
98321	4+2 WAY 4 TIER PPI VERTICAL	2+4	8+6+12	7431	1	7431
98322	6+2 WAY 4 TIER PPI VERTICAL	2+6	8+6+18	10907	1	10907
98323	8+2 WAY 4 TIER PPI VERTICAL	2+8	8+6+24	14231	1	14231
98324	12+2 WAY 4 TIER PPI VERTICAL	2+12	8+6+36	17660	1	17660
<b>HORIZONTAL PER PHASE ISOLATION DOUBLE DOOR DB</b>				<b>HSN Code : 85371000</b>		
98337	4+2 WAY HORIZONTAL PPI	2+4	8+6+12	7839	1	7839
98338	6+2 WAY HORIZONTAL PPI	2+6	8+6+18	9328	1	9328
98339	8+2 WAY HORIZONTAL PPI	2+8	8+6+24	11284	1	11284



# UNO DB



CODE	DESCRIPTION	No. of Ways	Incomer + Outgoing	Unit Sale Price Rs. per number	Standard Packing Quantity (Number)	Maximum Retail Price of Standard Packing (Inclusive of all taxes) Rs.
<b>EIGHT SEGMENT DOUBLE DOOR DB</b>				<b>HSN Code : 85371000</b>		
98333	4 WAY EIGHT SEGMENT	4	8+6+12	11013	1	11013
98334	6 WAY EIGHT SEGMENT	6	8+6+18	13404	1	13404
98335	8 WAY EIGHT SEGMENT	8	8+6+24	17527	1	17527
98336	12 WAY EIGHT SEGMENT	12	8+6+36	19366	1	19366
<b>PHASE SELECTOR VERTICAL TPN DOUBLE DOOR DB ( With Phase Selector, Indication Light &amp; Duly Wired)</b>				<b>HSN Code : 85371000</b>		
98325	4 WAY 40 A PHASE SELECTOR	4	8+12	12990	1	12990
98326	4 WAY 63 A PHASE SELECTOR	4	8+12	15386	1	15386
98327	6 WAY 40 A PHASE SELECTOR	6	8+12	13096	1	13096
98328	6 WAY 63 A PHASE SELECTOR	8	8+18	15656	1	15656
98329	8 WAY 40 A PHASE SELECTOR	8	8+24	14178	1	14178
98330	8 WAY 63 A PHASE SELECTOR	8	8+24	17050	1	17050
98331	12 WAY 40 A PHASE SELECTOR	12	8+36	19043	1	19043
98332	12 WAY 63 A PHASE SELECTOR	12	8+36	20506	1	20506
<b>PHASE SELECTOR HORIZONTAL TPN DOUBLE DOOR DB ( With Phase Selector, Indication Light &amp; Duly Wired)</b>				<b>HSN Code : 85371000</b>		
98451	4 WAY 40A PHASE SELECTOR	4	8+12	11045	1	11045
98452	4 WAY 63A PHASE SELECTOR	4	8+12	14427	1	14427
98453	6 WAY 40A PHASE SELECTOR	6	8+12	12270	1	12270
98454	6 WAY 63A PHASE SELECTOR	8	8+18	15243	1	15243
98455	8 WAY 40A PHASE SELECTOR	8	8+24	13102	1	13102
98456	8 WAY 63A PHASE SELECTOR	8	8+24	16684	1	16684
98457	12 WAY 40A PHASE SELECTOR	12	8+36	14602	1	14602
98458	12 WAY 63A PHASE SELECTOR	12	8+36	18428	1	18428

# UNO DB

CODE	DESCRIPTION	No. of Ways	Incomer + Outgoing	Unit Sale Price Rs. per number	Standard Packing Quantity (Number)	Maximum Retail Price of Standard Packing (Inclusive of all taxes) Rs.
<b>PREWIRE SPN DOUBLE DOOR DB</b>				<b>HSN Code : 85371000</b>		
98461	6 WAY SPN PREWIRE DD	6	2+6	4982	1	4982
98462	8 WAY SPN PREWIRE DD	8	2+8	5782	1	5782
98463	10 WAY SPN PREWIRE DD	10	2+10	7346	1	7346
98464	12 WAY SPN PREWIRE DD	12	2+12	8639	1	8639
98465	16 WAY SPN PREWIRE DD	16	2+16	9779	1	9779
<b>PREWIRE TPN DOUBLE DOOR DB</b>				<b>HSN Code : 85371000</b>		
98471	4 WAY TPN PREWIRE DD	4	8+12	10271	1	10271
98472	6 WAY TPN PREWIRE DD	6	8+24	12370	1	12370
98473	8 WAY TPN PREWIRE DD	8	8+24	14231	1	14231
98474	12 WAY TPN PREWIRE DD	12	8+36	17193	1	17193
<b>FLEXI TIER DOUBLE DOOR DB</b>				<b>HSN Code : 85371000</b>		
98345	14 MOD 2 ROW (28 MODULE) UNO DB			6848	1	6848
98346	14 MOD 3 ROW (42 MODULE) UNO DB			8565	1	8565
98347	14 MOD 4 ROW (56 MODULE) UNO DB			9635	1	9635
<b>TV &amp; TEL SPN DOUBLE DOOR DB</b>				<b>HSN Code : 85371000</b>		
98352	6 WAY SPN TV & TEL UNO DB	6	2+4	4744	1	4744
98353	8 WAY SPN TV & TEL UNO DB	8	2+6	4913	1	4913
98355	12 WAY SPN TV & TEL UNO DB	12	2+10	5517	1	5517
98356	16 WAY SPN TV & TEL UNO DB	16	2+14	6959	1	6959
<b>TV &amp; TEL TPN DOUBLE DOOR DB</b>				<b>HSN Code : 85371000</b>		
98360	4 WAY TPN TV & TEL UNO DB	4	8+12	8469	1	8469
98361	6 WAY TPN TV & TEL UNO DB	6	8+18	9010	1	9010
98362	8 WAY TPN TV & TEL UNO DB	8	8+24	10017	1	10017



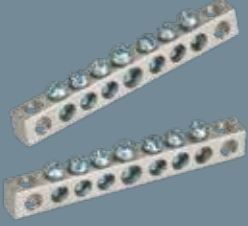
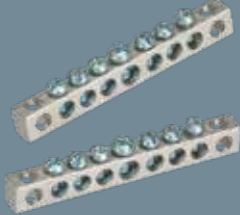
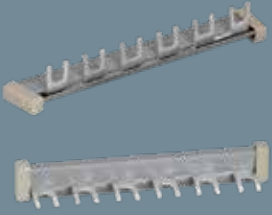
# UNO PLUS DB

CODE	DESCRIPTION	Unit Sale Price Rs. per number	Standard Packing Quantity (Number)	Maximum Retail Price of Standard Packing (Inclusive of all taxes) Rs.	Units in Master Packing (Number) Wholesale Pack
<b>UNO PLUS SPN DB</b>		<b>HSN Code : 85371000</b>			
98951	4 WAY SPN DD IP43 DB	2493	1	2493	-
98952	6 WAY SPN DD IP43 DB	2799	1	2799	-
98953	8 WAY SPN DD IP43 DB	3052	1	3052	-
98954	12 WAY SPN DD IP43 DB	3710	1	3710	-
98955	16 WAY SPN DD IP43 DB	4945	1	4945	-
98961	4 WAY SPN DD IP54 DB	7191	1	7191	-
98962	6 WAY SPN DD IP54 DB	7873	1	7873	-
98963	8 WAY SPN DD IP54 DB	8303	1	8303	-
98964	12 WAY SPN DD IP54 DB	9449	1	9449	-
98965	16 WAY SPN DD IP54 DB	10366	1	10366	-
<b>UNO PLUS TPN DB</b>		<b>HSN Code : 85371000</b>			
98956	4 way TPN 4+12 (4P Incomer) DD IP43 DB	5621	1	5621	-
98957	4 way TPN 8+12 (8P Incomer) DD IP43 DB	6109	1	6109	-
98958	6 way TPN 8+18 DD IP43 DB	7703	1	7703	-
98959	8 way TPN 8+24 DD IP43 DB	9996	1	9996	-
98960	12 way TPN 8+36 DD IP43 DB	14218	1	14218	-
98966	4 way TPN 4+12 (4P Incomer) DD IP54 DB	15800	1	15800	-
98967	4 way TPN 8+12 (8P Incomer) DD IP54 DB	16587	1	16587	-
98968	6 way TPN 8+18 DD IP54 DB	19780	1	19780	-
98969	8 way TPN 8+24 DD IP54 DB	22744	1	22744	-
98970	12 way TPN 8+36 DD IP54 DB	31952	1	31952	-
<b>UNO ALLURE DB</b>		<b>HSN Code : 85371000</b>			
98987	6 WAY UNO PLUS ALLURE DB	2564	1	2564	-
98988	8 WAY UNO PLUS ALLURE DB	2828	1	2828	-
98989	10 WAY UNO PLUS ALLURE DB	3099	1	3099	-
98990	12 WAY UNO PLUS ALLURE DB	3381	1	3381	-



# UNO DB ACCESSORIES

CODE	DESCRIPTION	Unit Sale Price Rs. per number	Standard Packing Quantity (Number)	Maximum Retail Price of Standard Packing (Inclusive of all taxes) Rs.	Units in Master Packing (Number) Wholesale Pack
<b>DB ACCESSORIES</b>		<b>HSN Code : 85371000</b>			
98401	SLIDING KNOB	79	10	790	-
98402	BLANKING PLATE	31	10	310	-
98403	NEUTRAL LINK BASE (NYLON)	68	10	680	-
<b>SINGLE PHASE INSULATED BUS BAR (FORK TYPE)</b>		<b>HSN Code : 85371000</b>			
98405	4 WAY INSULATED BUS BAR	217	10	2170	-
98406	5 WAY INSULATED BUS BAR	243	10	2430	-
98407	6 WAY INSULATED BUS BAR	259	10	2590	-
98408	7 WAY INSULATED BUS BAR	280	10	2800	-
98409	8 WAY INSULATED BUS BAR	307	10	3070	-
98410	11 WAY INSULATED BUS BAR	344	10	3440	-
98411	12 WAY INSULATED BUS BAR	386	10	3860	-
98412	15 WAY INSULATED BUS BAR	402	10	4020	-
98413	16 WAY INSULATED BUS BAR	424	10	4240	-
<b>NEUTRAL LINK</b>		<b>HSN Code : 85371000</b>			
98421	6 WAY SPN NEUTRAL LINK	233	10	2330	-
98422	8 WAY SPN NEUTRAL LINK	280	10	2800	-
98423	12 WAY SPN NEUTRAL LINK	312	10	3120	-
98424	16 WAY SPN NEUTRAL LINK	355	10	3550	-
98425	4 WAY TPN NEUTRAL LINK	323	10	3230	-
98426	6 WAY TPN NEUTRAL LINK	397	10	3970	-
98427	8 WAY TPN NEUTRAL LINK	466	10	4660	-
<b>EARTH LINK</b>		<b>HSN Code : 85371000</b>			
98431	6 WAY SPN EARTH LINK	233	10	2330	-
98432	8 WAY SPN EARTH LINK	280	10	2800	-
98433	12 WAY SPN EARTH LINK	312	10	3120	-
98434	16 WAY SPN EARTH LINK	355	10	3550	-
98435	4 WAY TPN EARTH LINK	323	10	3230	-
98436	6 WAY TPN EARTH LINK	397	10	3970	-
98437	8 WAY TPN EARTH LINK	466	10	4660	-
<b>SHROUDED NUTRAL LINK COVER</b>		<b>HSN Code : 85371000</b>			
98441	6 WAY SPN NEUTRAL LINK SHROUDED COVER	79	10	790	-
98442	8 WAY SPN NEUTRAL LINK SHROUDED COVER	84	10	840	-
98443	12 WAY SPN NEUTRAL LINK SHROUDED COVER	100	10	1000	-
98444	16 WAY SPN NEUTRAL LINK SHROUDED COVER	116	10	1160	-
98445	4 WAY TPN NEUTRAL LINK SHROUDED COVER	111	10	1110	-
98446	6 WAY TPN NEUTRAL LINK SHROUDED COVER	143	10	1430	-
98447	8 WAY TPN NEUTRAL LINK SHROUDED COVER	174	10	1740	-







#### TERMS AND CONDITIONS

- 1) Prices are in INR ₹.
- 2) All prices are subject to the general terms and conditions of our business.
- 3) Prices are subject to change without prior notice.
- 4) This price list supersedes all our previous price lists.
- 5) If any dispute should arise it will be subject to Thane jurisdiction.
- 6) Company reserves the right to issue amendments which may arise due to any errors in the price list.
- 7) Colour in images are for reference purpose only, please see product for actual colour.
- 8) 3 Year Guarantee on UNO MCB's & 7 Year Guarantee on UNO Plus MCB's from the date of manufacturing.

Due to continuous improvements in product design and development and manufacturing methods, the product may differ in some aspects from the details provided herein.

#### PANASONIC LIFE SOLUTIONS INDIA PVT. LTD.

**Corporate & Head Office:** 3rd Floor, B Wing, I-Think Techno Campus, Pokharan Road No.2, Thane (W), Thane - 400 607, Maharashtra.

Tel. 022 4222 8888 | Fax. 022 4222 8884

Customer Care no.: 022-41304130 | WhatsApp: 9136028606

Email: [wecare@in.panasonic.com](mailto:wecare@in.panasonic.com) | [www.lsin.panasonic.com](http://www.lsin.panasonic.com)

**Registered Office:** 12th Floor, Ambience Tower, Ambience Island, NH-48, Gurugram - 122 002, Haryana.

**Distributor / Dealer Stamp**