

Empower Your Mobility

DRIVE INTO FUTURE WITH EV CHARGERS



AC & DC CHARGERS



Top Notch Design
& Technology



User Friendly
Interface



Inbuilt Metering for
Load Management



Safety &
Protection



Extensive
Support



Authentication
& Connectivity

Empowering the Electric Revolution with Panasonic

Join the electric revolution with our cutting-edge EV chargers, catering to diverse needs from home charging to public stations, ensuring seamless experiences on the go. With a comprehensive lineup including AC Outlet, AC chargers, and DC Chargers, we cater to residential, commercial, and industrial segments, providing versatile solutions for every charging requirement.

OUR OFFERINGS

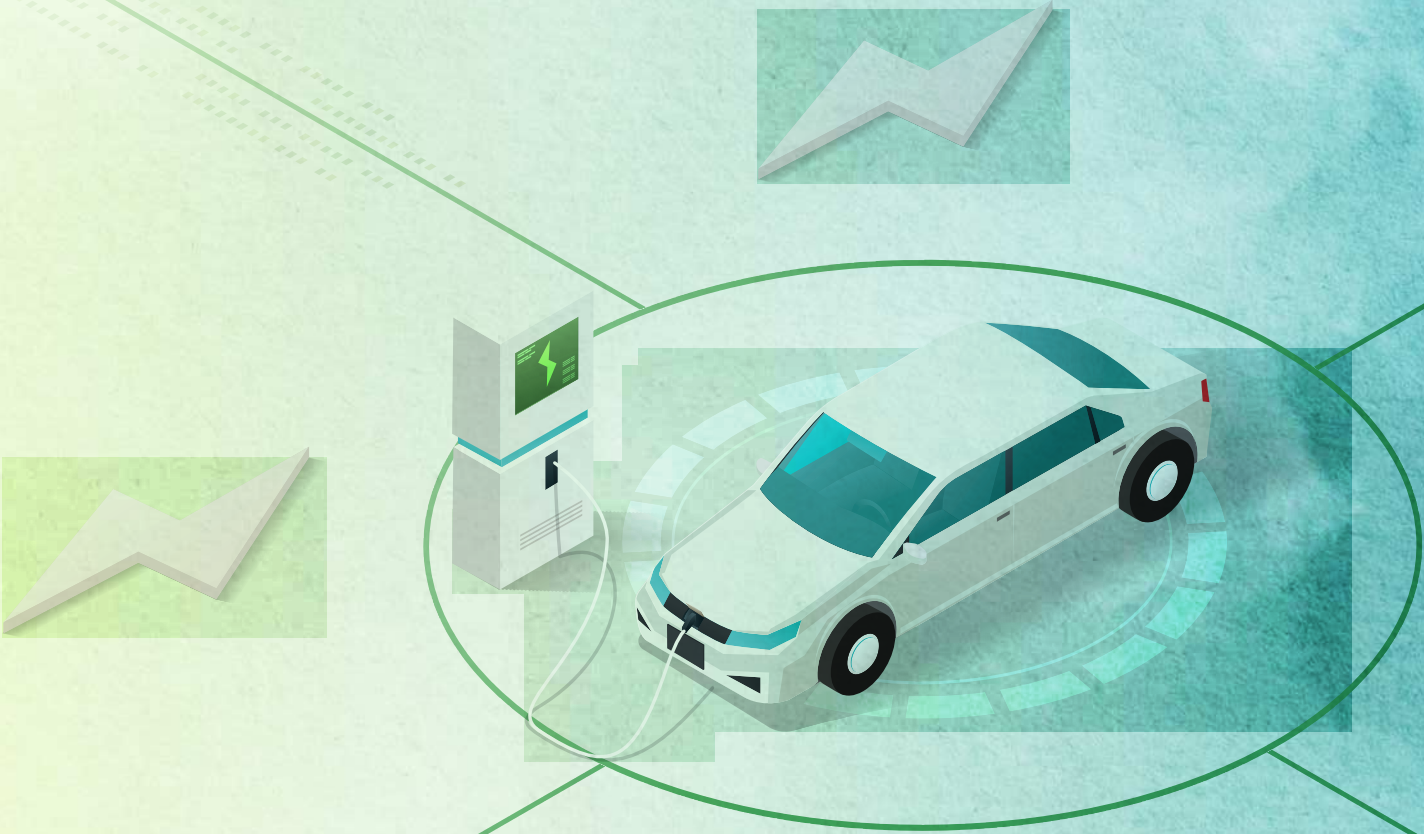
AC CHARGER: The AC EV charger offers the perfect blend of efficiency and convenience, ideal for seamless, everyday charging.

Parameter	Bharat AC	7.4kw	11kw	22kw
Input Voltage (AC)	415 Vac + 10% or -6%	240 Vac + 10% or -6%	415 Vac + 10% or -6%	415 Vac + 10% or -6%
Input Frequency	50Hz	50Hz	50Hz	50Hz
Wires	Three Phase, 5 wire (L1, L2, L3, N & PE)	Single Phase, 3 wire (L1, N & PE)	Three Phase, 5 wire (L1, L2, L3, N & PE)	
Output Connector	Bharat AC [IEC-60309]	Type 2 AC [IEC 62196-2]		
Number of Outputs	3	1		
Output Current	16A Max Per output	32A Max output	16A Max Output	32A Max output
Output Rating	240 Vac	240 Vac	415 Vac	415 Vac
Ambient Temperature	0° C to 55° C			
Storage Temperature	-20° C to 60° C			
Altitude	< 2000 mtr			
Humidity	5% to 95%, non-condensing			
Display	4.3" Graphic Display			
Language	English			
Push Button	Emergency Stop (Mushroom Red)			
User Authentication	Using Mobile Application or User Interface/QR Code/ RFID Card/ Password Login			
Visual Indication	Display			
RFID Specifications	RC 522 RFID Reader ISO/IEC 14443A/MIFARE			
Protection	Over Current, Under Voltage, Over Voltage, Residual Current, Surge Protection, Ground Fault Protection, Emergency Shutdown, Over Temperature, Protection Against Electric Shock			
Connectivity and CMS	OCPP v 1.6 over 10/100 Base-T Ethernet (Standard), GSM Modem (4G) and WiFi			
Charger & Vehicle	As per BEVC-AC 001 specifications	Type 2 AC as per IS 17017		
IP Rating	IP 54			
Shell Material	CRCA Sheet			
Cooling	Natural Cooled			
Product Dimension(L*W*H)	450mm* 168mm* 668mm	320mm* 168mm* 405mm	320mm* 168mm* 405mm	320mm* 168mm* 405mm
Product Weight	25kgs	26kgs	26kgs	26kgs

DC CHARGER: Accelerate your charging experience with advanced DC charger—faster, smarter, and ready for the future of mobility

Parameter	30Kw	60kW
Input Voltage (AC)	415VAC +/- 10 %	415 Vac + 10% or -6%
Input Frequency	50Hz	50Hz
Wires	Three Phase (L1, L2, L3, N, PE)	Three Phase(L1, L2, L3, N, PE)
Output Connector	CCS2	CCS2 (IEC 62196.3-2014)
Number of Outputs	1	2
Output Current	0 to 80A	200A (120A per gun when both in operation)
Output Rating	30kW	60kW when single gun in operation (30kW + 30kW when both gun in operation)
Ripple Factor	-	≤ ±5%
Efficiency	≥ 94% at nominal output power	≥ 95%
Power Factor	> 0.98	≥ 0.99 (above 50% load)
THD	-	≤ 5% (above 50% load)
Ambient Temperatur	0°C to 55°C	0°C to 60°C (derating starts from 55°C)
Storage Temperature	-30°C to 55°C	-20°C to 70°C
Altitude	< 2000m	2000 Mt
Humidity	≤ 95%	5% to 95%
Noise Level	65 dB	≤ 60 dB
Display	7" LCD with Touch Screen	10.1" TFT LCD Touch Screen
Language	English	English
Push Button	Emergency Stop	Emergency Stop (Mushroom Red)
User Authentication	Using Mobile Application or User Interface/ QR Code/RFID Card/Password Login	Using Mobile Application or User Interface/QR Code/ RFID Card/ Password Login
Visual Indication	Display	Display
RFID Specifications	ISO IEC 14443A/B	RC 522 RFID Reader ISO/IEC 14443A/MIFARE





Panasonic Life Solutions India Pvt. Ltd.

3rd Floor, B Wing, I-Think Techno Campus, Pokhran Road No 2,
Thane (west)- 400607, Maharashtra.

Website: www.isin.panasonic.com | Customer Care No.:022-41304130

Email: EVC.PLSIND@in.panasonic.com



Scan here to download
technical datasheets

Empowering the electric revolution

EV CHARGING SOLUTIONS



TYPE 2 AC CHARGER (7.4 KW)

Hardware & Design

- Cutting-edge hardware technology & design
- IP 54 Certified robust design
- Interactive Display & easy-to-use interface

Safety & Reliability

- Rigorously tested for safety, efficiency & reliability
- Inbuilt Safety Features – Over Voltage, Under Voltage & Over Current
- Residual Current Protection/Earth Fault Protection by Type B RCCB
- Emergency Stop Button

Charging Specifications

- Single Phase Input /Output with Type 2 gun
- Compatible with all 4 wheeler cars

Extensive Support

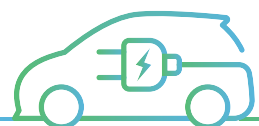
- Comprehensive warehouse facilities available across India
- Dedicated support for efficient operations

Authentication & Connectivity

- Authentication via RFID/CMS Mobile app
- Seamless connection to the cloud via GSM/WIFI/Ethernet & OCPP 1.6J compliance

Load Management

- Built-in energy meter
- Set up for external energy meter integration or dynamic load management
- Ready for integration with advanced smart building energy systems



Technical Specification

TYPE 2 AC CHARGER (7.4 KW)

INPUT POWER

Input Voltage (AC)	240 Vac + 10% or -6%
Input Frequency	50Hz
Wires	Single Phase, 3 wire (L1, N & PE)

OUTPUT POWER

Output Connector	Type 2 AC [IEC 62196-2]
Number of Outputs	1
Output Current	32A Max output
Output Rating	240 Vac

OPERATING CONDITION

Ambient Temperature	0° C to 55° C
Storage Temperature	-20° C to 60° C
Altitude	< 2000 mtr
Humidity	5% to 95%, non-condensing

USER INTERFACE AND CONTROL

Display	4.3" Graphic Display
Language	English
Emergency Stop	Push Button (Mushroom, Red)
User Authentication	Using Mobile Application or User Interface/ QR Code/RFID Card/Password Login
Visual Indication	RGB LED
RFID Specifications	RC 522 RFID Reader ISO/IEC 14443A/MIFARE

PROTECTION

Protection	Over Current, Under Voltage, Over Voltage, Residual Current, Surge Protection, Ground Fault Protection, Emergency Shutdown with Alarm, Short Circuit Protection, Over Temperature, Protection Against Electric Shock
------------	--

COMMUNICATION

Connectivity and CMS	OCPP v 1.6 over 10/100 Base-T Ethernet (Standard), GSM Modem (4G) and WiFi
Charger and Vehicle	Type 2 AC as per IS 17017

MECHANICAL CHARACTERISTIC

IP Rating	IP 54
Shell Material	CRCA Sheet
Cooling	Natural Cooled
Product Dimension(L*W*H)	320mm* 168mm* 405mm
Product Weight	26kgs

PRODUCT PACKAGING WEIGHT

Wooden Box	Additional 6-7 kgs
Corrugated Box	Additional 2-3 kgs

Panasonic Life Solutions India Pvt. Ltd.

Registered Office : 12th Floor, Ambience Tower, Ambience Island, NH-48, Gurugram, Haryana - 122 002.

In case of consumer complaints contact customer care executive: 3rd Floor, B Wing, I-Think Techno Campus, Pokhran Road No 2, Thane (west) -400607, Maharashtra.

T: (9122) 42228888 | F: (9122) 42228888 | Customer care no.: (022) 41304130 | WhatsApp No: 91360 28606

Email: EVC.PLSIND@in.panasonic.com | www.lsin.panasonic.com

Empowering the electric revolution

EV CHARGING SOLUTIONS



BHARAT AC 001

Hardware & Design

- Cutting-edge hardware technology & design
- IP 54 Certified robust design
- Interactive Display & easy-to-use interface

Safety & Reliability

- Rigorously tested for safety, efficiency & reliability
- Inbuilt Safety Features – Over Voltage, Under Voltage & Over Current
- Residual Current Protection/Earth Fault Protection by Type B RCCB
- Emergency Stop Button

Charging Specifications

- Three Phase Input (240V/16A)*3
Industrial socket output
- Compatible with all 4 wheeler cars

Extensive Support

- Comprehensive warehouse facilities available across India
- Dedicated support for efficient operations

Authentication & Connectivity

- Authentication via RFID/CMS Mobile app
- Seamless connection to the cloud via GSM/WIFI/Ethernet & OCPP 1.6J compliance

Load Management

- Built-in energy meter
- Set up for external energy meter integration or dynamic load management
- Ready for integration with advanced smart building energy systems



Technical Specification

Bharat AC 001

INPUT POWER

Input Voltage (AC)	415 Vac + 10% or -6%
Input Frequency	50Hz
Wires	Three Phase, 5 wire (L1, L2, L3, N & PE)

OUTPUT POWER

Output Connector	Bharat AC [IEC-60309]
Number of Outputs	3
Output Current	16A Max Per output
Output Rating	240 Vac

OPERATING CONDITION

Ambient Temperature	0° C to 55° C
Storage Temperature	-20° C to 60° C
Altitude	< 2000 mtr
Humidity	5% to 95%, non-condensing

USER INTERFACE AND CONTROL

Display	4.3" Graphic Display
Language	English
Emergency Stop	Push Button (Mushroom, Red)
User Authentication	Using Mobile Application or User Interface/ QR Code/RFID Card/ Password Login
Visual Indication	RGB LEDs
RFID Specifications	RC 522 RFID Reader ISO/IEC 14443A/MIFARE

PROTECTION

Protection	Over Current, Under Voltage, Over Voltage, Residual Current, Surge Protection, Ground Fault Protection, Emergency Shutdown with Alarm, Short Circuit Protection, Over Temperature, Protection Against Electric Shock
------------	--

COMMUNICATION

Connectivity and CMS	Ocpp v 1.6 over 10/100 Base-T Ethernet (Standard), GSM Modem (4G) and WiFi
Charger and Vehicle	As per BEVC-AC 001 specifications

MECHANICAL CHARACTERISTIC

IP Rating	IP 54
Shell Material	CRCA Sheet
Cooling	Natural Cooled
Product Dimension(L*W*H)	450mm* 168mm* 668mm
Product Weight	26kgs

PRODUCT PACKAGING WEIGHT

Wooden Box	Additional 6-7 kgs
Corrugated Box	Additional 2-3 kgs

Panasonic Life Solutions India Pvt. Ltd.

Registered Office : 12th Floor, Ambience Tower, Ambience Island, NH-48, Gurugram, Haryana - 122 002.

In case of consumer complaints contact customer care executive: 3rd Floor, B Wing, I-Think Techno Campus, Pokhran Road No 2, Thane (west) -400607, Maharashtra.

T: (9122) 42228888 | F: (9122) 42228888 | Customer care no.: (022) 41304130 | WhatsApp No: 91360 28606

Email: EVC.PLSIND@in.panasonic.com | www.lsin.panasonic.com

Information on how to install and operate this product is available in the installation manual instructions. All values indicated in this data sheet are subject to changes without prior announcement. This specification may be very slight. Colour differences of the product relative to the figures as well as discolouration of/in the product which do not impair their proper functioning are possible and do not constitute a deviation from the specification.

Empowering the electric revolution

EV CHARGING SOLUTIONS



TYPE 2 AC CHARGER (11 KW)

Hardware & Design

- Cutting-edge hardware technology & design
- IP 54 Certified robust design
- Interactive Display & easy-to-use interface

Charging Specifications

- Three Phase Input /Output with Type 2 gun
- Inbuilt metering for Load management
- Compatible with all 4 wheeler cars

Authentication & Connectivity

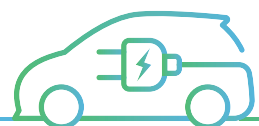
- Authentication via RFID/CMS Mobile app
- Seamless connection to the cloud via GSM/WIFI/Ethernet & OCPP 1.6J compliance

Safety & Reliability

- Rigorously tested for safety, efficiency & reliability
- Inbuilt Safety Features - Over Voltage, Under Voltage & Over Current
- Residual Current Protection/Earth Fault Protection by Type B RCCB

Extensive Support

- Comprehensive warehouse facilities available across India
- Dedicated support for efficient operations



Technical Specification

TYPE 2 AC CHARGER (11 KW)

INPUT POWER

Input Voltage (AC)	415 Vac + 10% or -6%
Input Frequency	50Hz
Wires	Three Phase, 5 wire (L1, L2, L3, N & PE)

OUTPUT POWER

Output Connector	Type 2 AC [IEC 62196-2]
Number of Outputs	1
Output Current	16A Max output
Output Rating	415 Vac

OPERATING CONDITION

Ambient Temperature	0° C to 55° C
Storage Temperature	-20° C to 60° C
Altitude	< 2000 mtr
Humidity	5% to 95%, non-condensing

USER INTERFACE AND CONTROL

Display	4.3" Graphic Display
Language	English
Push Button	Emergency Stop (Mushroom, Red)
User Authentication	Using Mobile Application or User Interface/ QR Code/RFID Card/Password Login
Visual Indication	RGB LED
RFID Specifications	RC 522 RFID Reader ISO/IEC 14443A/MIFARE

PROTECTION

Protection	Over Current, Under Voltage, Over Voltage, Residual Current, Surge Protection, Ground Fault Protection, Emergency Shutdown with Alarm, Short Circuit Protection, Over Temperature, Protection Against Electric Shock
------------	--

COMMUNICATION

Connectivity and CMS	Ocpp v 1.6 over 10/100 Base-T Ethernet (Standard), GSM Modem (4G) and WiFi
Charger and Vehicle	Type 2 AC as per IS 17017

MECHANICAL CHARACTERISTIC

IP Rating	IP 54
Shell Material	CRCA Sheet
Cooling	Natural Cooled
Product Dimension (L*W*H)	320mm x 168mm x 405mm
Product Weight	26kgs

PRODUCT PACKAGING WEIGHT

Wooden Box	Additional 6-7 kgs
Corrugated Box	Additional 2-3 kgs

Panasonic Life Solutions India Pvt. Ltd.

Registered Office : 12th Floor, Ambience Tower, Ambience Island, NH-48, Gurugram, Haryana - 122 002.

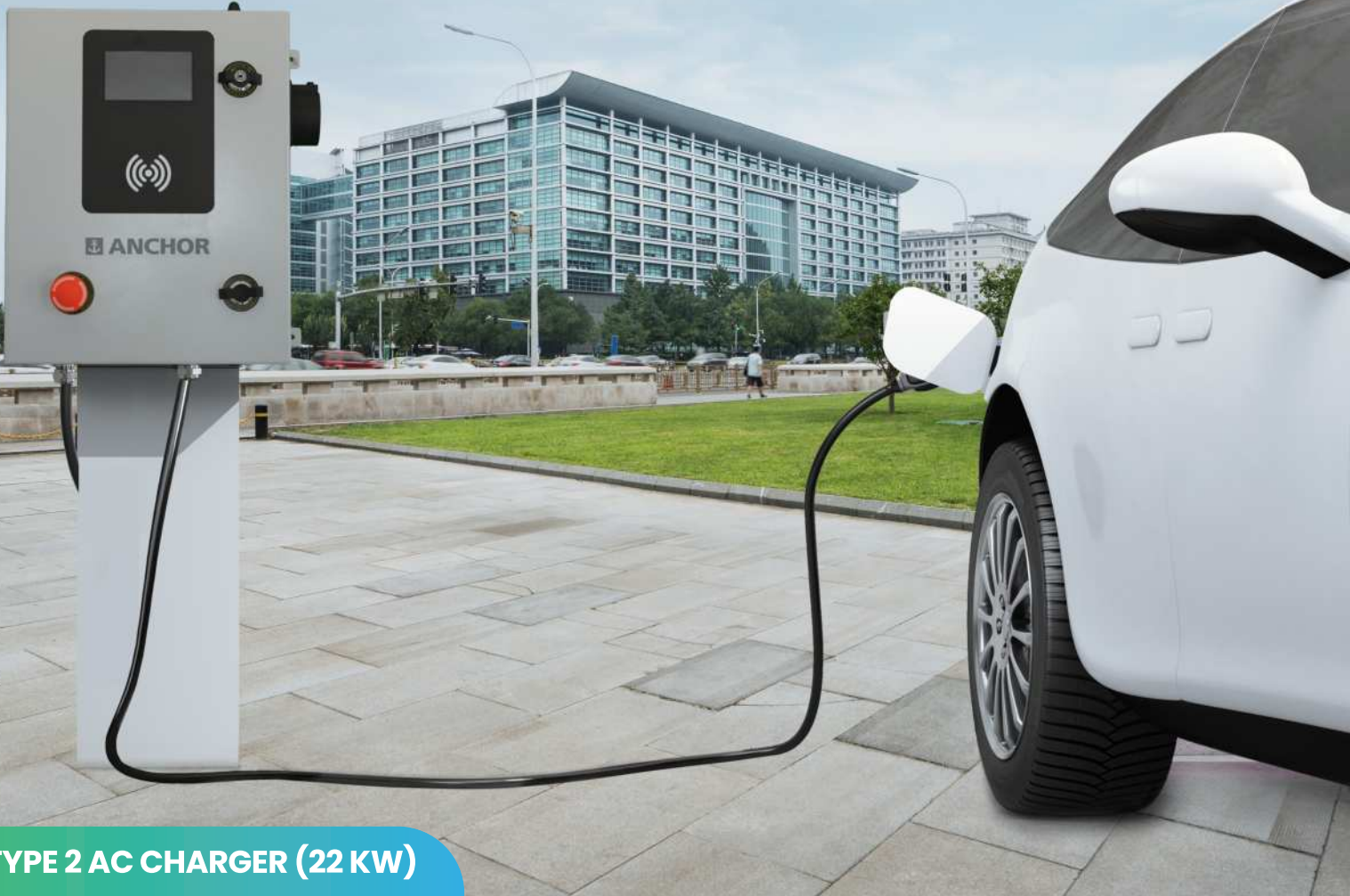
In case of consumer complaints contact customer care executive: 3rd Floor, B Wing, I-Think Techno Campus, Pokhran Road No 2, Thane (west) -400607, Maharashtra.

T: (9122) 42228888 | F: (9122) 42228888 | Customer care no.: (022) 41304130 | WhatsApp No: 91360 28606

Email: EVC.PLSIND@in.panasonic.com | www.lsin.panasonic.com

Empowering the electric revolution

EV CHARGING SOLUTIONS



TYPE 2 AC CHARGER (22 KW)

Hardware & Design

- Cutting-edge hardware technology & design
- IP 54 Certified robust design
- Interactive Display & easy-to-use interface

Charging Specifications

- Three Phase Input /Output with Type 2 gun
- Inbuilt metering for Load management
- Compatible with all 4 wheeler cars

Authentication & Connectivity

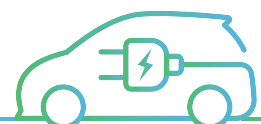
- Authentication via RFID/CMS Mobile app
- Seamless connection to the cloud via GSM/WIFI/Ethernet & OCPP 1.6J compliance

Safety & Reliability

- Rigorously tested for safety, efficiency & reliability
- Inbuilt Safety Features - Over Voltage, Under Voltage & Over Current
- Residual Current Protection/Earth Fault Protection by Type B RCCB

Extensive Support

- Comprehensive warehouse facilities available across India
- Dedicated support for efficient operations



Technical Specification

TYPE 2 AC CHARGER (22 KW)

INPUT POWER

Input Voltage (AC)	415 Vac + 10% or -6%
Input Frequency	50Hz
Wires	Three Phase, 5 wire (L1, L2, L3, N & PE)

OUTPUT POWER

Output Connector	Type 2 AC [IEC 62196-2]
Number of Outputs	1
Output Current	32A Max output
Output Rating	415 Vac

OPERATING CONDITION

Ambient Temperature	0° C to 55° C
Storage Temperature	-20° C to 60° C
Altitude	< 2000 mtr
Humidity	5% to 95%, non-condensing

USER INTERFACE AND CONTROL

Display	4.3" Graphic Display
Language	English
Emergency Stop	Push Button (Mushroom, Red)
User Authentication	Using Mobile Application or User Interface/ QR Code/RFID Card/Password Login
Visual Indication	RGB LED
RFID Specifications	RC 522 RFID Reader ISO/IEC 14443A/MIFARE

PROTECTION

Protection	Over Current, Under Voltage, Over Voltage, Residual Current, Surge Protection, Ground Fault Protection, Emergency Shutdown with Alarm, Short Circuit Protection, Over Temperature, Protection Against Electric Shock
------------	--

COMMUNICATION

Connectivity and CMS	Ocpp v 1.6 over 10/100 Base-T Ethernet (Standard), GSM Modem (4G) and WiFi
Charger and Vehicle	Type 2 AC as per IS 17017

MECHANICAL CHARACTERISTIC

IP Rating	IP 54
Shell Material	CRCA Sheet
Cooling	Natural Cooled
Product Dimension (L*W*H)	320mm* 168mm* 405mm
Product Weight	26kgs

PRODUCT PACKAGING WEIGHT

Wooden Box	Additional 6-7 kgs
Corrugated Box	Additional 2-3 kgs

Panasonic Life Solutions India Pvt. Ltd.

Registered Office : 12th Floor, Ambience Tower, Ambience Island, NH-48, Gurugram, Haryana - 122 002.

In case of consumer complaints contact customer care executive: 3rd Floor, B Wing, I-Think Techno Campus, Pokhran Road No 2, Thane (west) -400607, Maharashtra.

T: (9122) 42228888 | F: (9122) 42228888 | Customer care no.: (022) 41304130 | WhatsApp No: 91360 28606

Email: EVC.PLSIND@in.panasonic.com | www.lsin.panasonic.com

Information on how to install and operate this product is available in the installation manual instructions. All values indicated in this data sheet are subject to changes without prior announcement. This specification may be very slight. Colour differences of the product relative to the figures as well as discolouration of/in the product which do not impair their proper functioning are possible and do not constitute a deviation from the specification.



DC CHARGER | 60 kW



HARDWARE & DESIGN

- Cutting-edge hardware technology & design
- IP 54 certified robust design
- Interactive display & easy-to-use interface



AUTHENTICATION & CONNECTIVITY

- Authentication via app or RFID
- Seamless connection to the cloud via GSM/WIFI/Ethernet
- OCPP 1.6J compliance (upgradable to 2.0.1)
- Configuration via the app web portal



SAFETY & RELIABILITY

- Rigorously tested for safety, efficiency & reliability
- Inbuilt safety features: Over current, Over voltage and Under voltage
- Surge protection
- Emergency stop button
- Polarity reverse protection



CHARGING SPECIFICATIONS

- Three phase input
- 2 x CSS2 (IEC 61296.3 -2014)
- IEC 15118 EIM & PNC



LOAD MANAGEMENT

- Built-in energy meter
- Set up for external energy meter integration or dynamic load management
- Ready for integration with advanced smart building energy systems



EXTENSIVE SUPPORT

- Comprehensive warehouse facilities and dedicated support for efficient operations across India



INPUT POWER

Input Voltage (AC)	415 Vac (+ 15%)
Input Frequency	50Hz
Wires	Three Phase (L1, L2, L3, N, PE)

OUTPUT POWER

Output Connector	CCS2 (IEC 62196.3-2014)
Number of Outputs	2
Output Current	200A (120A per gun when both in operation)
Output Rating	60kW when single gun in operation (30kW + 30kW when both gun in operation)

COMMUNICATION

Connectivity and CMS	OCPP v 1.6J over 10/100 Base-T Ethernet (Standard), GSM Modem (4G) and WiFi
Charger and Vehicle	DIN 70121, ISO 15118 (EIM & PnC), IEC 61851

USER INTERFACE & CONTROL

Display	10.1" TFT LCD Touch Screen
Language	English
Push Button	Mushroom Type, Emergency Stop
User Authentication	Using Mobile Application or User Interface / QR Code / RFID Card / Password Login / Optional UPI payment
Visual Indication	RGB LEDs
RFID Specifications	RC 522 RFID Reader ISO / IEC 14443A / MIFARE

MECHANICAL CHARACTERISTIC

IP Rating	IP 54
Shell Material	CRCA Sheet
Cooling	Air Cooling
Product Dimension (L*W*H)	800 x 680 x 2002 mm
Product Weight	305 kg
Certification	ARAI (IS 17017)

ELECTRIC PARAMETER

Ripple Factor	≤ ±5%
Efficiency	≥ 95%
Power Factor	≥ 0.99 (above 50% load)
THD	≤ 5% (above 50% load)

OPERATING / STORAGE CONDITION

Ambient Temperature	0°C to 60°C (derating starts from 55°C)
Storage Temperature	-20°C to 70°C
Altitude	2000 Mt
Humidity	5% to 95%
Noise Level	≤ 60 dB

PROTECTION

Protection	<ul style="list-style-type: none"> • Over Current • Over Voltage • Under Voltage • Surge Protection • Short Circuit • Ground Fault Protection • Emergency Shutdown with Alarm • Over Temperature • Polarity Reverse Protection • Insulating Monitoring • Leakage Protection • Charge Cable Temperature Detection • Earth Presence Detection
------------	--



Panasonic Life Solutions India Pvt. Ltd.

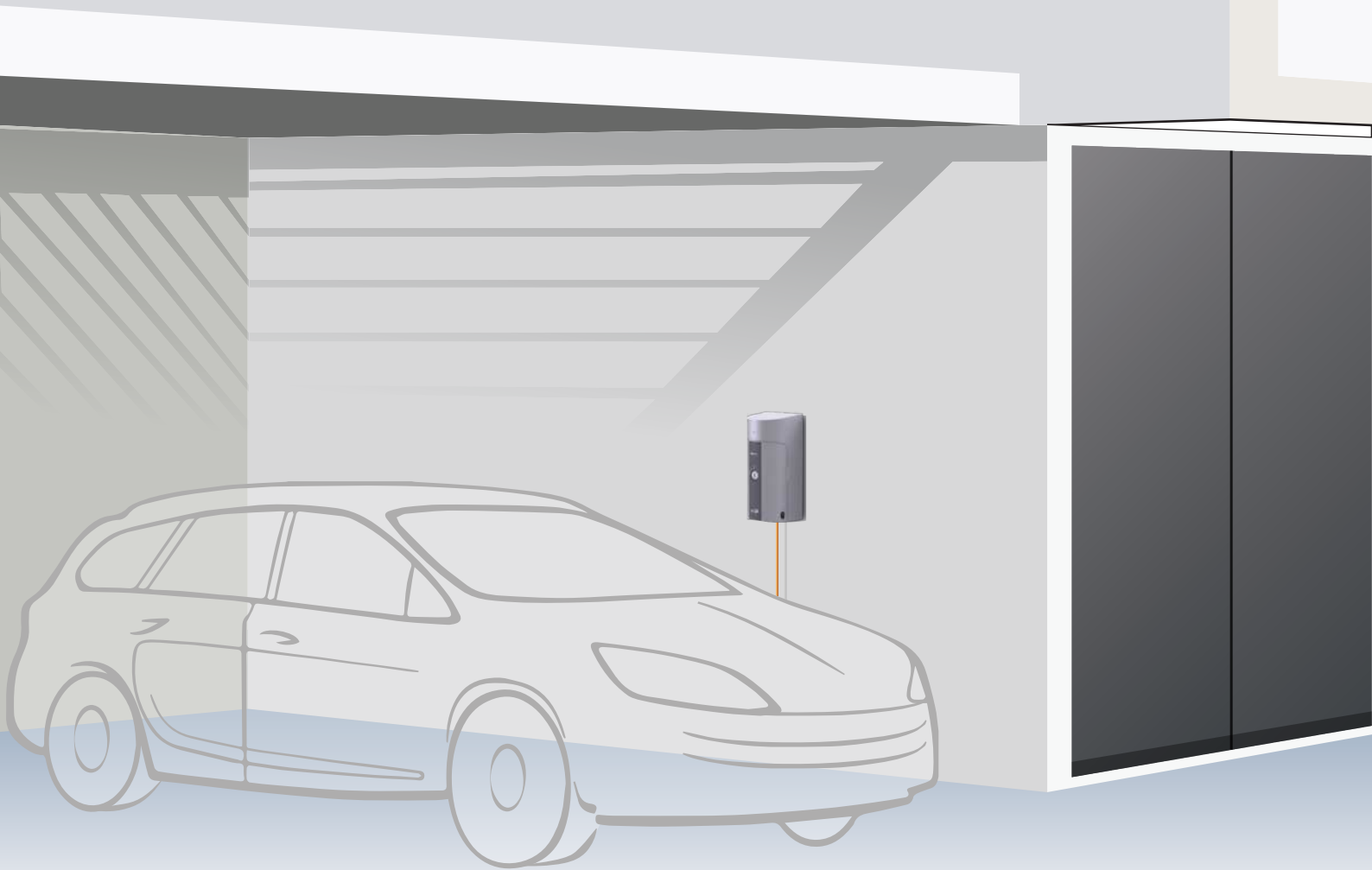
Registered Office: 12th Floor, Ambience Tower, Ambience Island, NH-48, Gurugram, Haryana - 122 002.

In case of consumer complaints contact customer care executive: 3rd Floor, B Wing, I-Think Techno Campus, Pokhran Road No 2, Thane (west) -400607, Maharashtra.

T: (9122) 42228888 | F: (9122) 42228888 | Customer care no.: (022) 41304130 | WhatsApp No: 91360 28606

Email: EVC.PLSIND@in.panasonic.com | www.lsin.panasonic.com

Panasonic



EV Outlet



Restricted access
to On / Off Switch
via Key Lock



Tamper Proof -
Lock the door
when plugged in



Power ON
LED Indication



Flame
Retardant



RoHS
Compliant



Made in
India





EV Outlet

ELECTRICALS SPECIFICATIONS

Power Capacity: 3.6kW Max

Rated Current: 16A Max

Rated Frequency: 50Hz

Rated Voltage: 240VAC

PERFORMANCE

Complying to Glow wire test as per IEC

UV resistant raw material used as per UL746C
(for outdoor suitability)

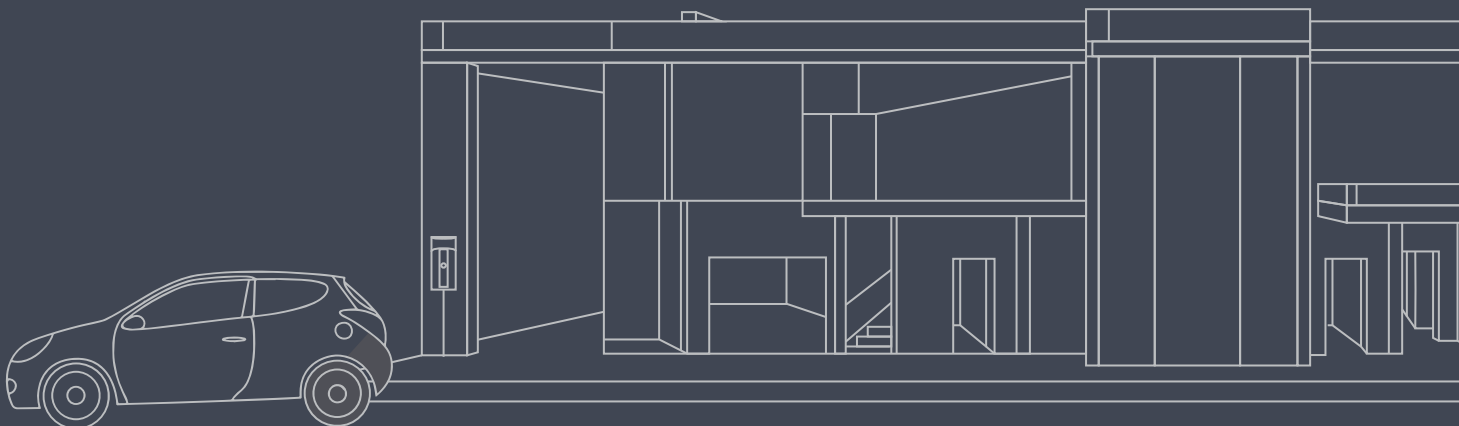
Door & Lock reliability (for opening / closing)
- Min 10,000 operations

Tested for 240 hours of Salt mist test.



PRODUCT DIMENSION

LxWxH: 95x98x210mm (Approx.)



Panasonic



EV Outlet



Restricted access
to On / Off Switch
via Key Lock



Tamper Proof -
Lock the door
when plugged in



Power ON/Charger ON
/Active/ Error
LED Indication



Monitoring and
Control through
Mobile App



Energy
Consumption
History



Indoor Range:
15 Meters



Flame
Retardant



RoHS
Compliant



Made in
India





EV Outlet

ELECTRICALS SPECIFICATIONS

Power Capacity: 3.6kW Max

Rated Current: 16A Max

Rated Frequency: 50Hz

Operating Voltage Range:

Universal AC (85-265VAC)

SAFETY & PROTECTION

Surge Protection: >2.5 kV

Over Voltage Protection: \geq 265VAC

Over Current Protection: \geq 20A

Leakage Current: \leq 3.5mA
(provided by external RCD)



PERFORMANCE

Complying to Glow wire test as per IEC

UV resistant raw material used as per UL746C (for outdoor suitability)

In case of abrupt removal of charging cable, system should immediately detect and save the data.

Door & Lock reliability (for opening / closing) - Min 10,000 operations

Tested for 240 hours of Salt mist test.

IP
42

IK
08

Switch- complying with IEC 60669-1

6/16A Twin socket – IEC60884-1

IEC 61000-4-2, IEC 61000-4-3, IEC 61000-4-4,
IEC 61000-4-5, IEC 61000-4-6, IEC 61000-4-11

MOBILE APP FEATURES

Secure way of connecting to Smart EV Socket, with minimum features like:

Secured BLE pairing and login

Separate Admin and Guest user login

Users from Admin Login Management (Addition and Deletion)

Charging ON / OFF

Energy consumption usage

Power usage parameters like units to be shown on the app & also a calculation based on unit price can be shown

Capability of monitoring the power consumption of each user.

Past 30 days energy consumption history

Historic data

ENERGY MONITORING

Energy consumption usage parameters like kWh will be shown on the App.

Metering Accuracy +/-5%

Other Parameters like Voltage (RMS), Current (RMS),

Power Factor,

Mean Active Power,

Mean Reactive Power,

Frequency,

Phase angle between voltage &

Current can also be monitored through App.

DATA LOG SAFETY/ASSURANCE

System can detect the main AC input power failure.

In case of abrupt removal of charging cable, system should immediately detect and save the data.

BLE COMMUNICATION FOR MOBILE APPS CONNECTIVITY

BLE version 4.2 onwards compatible for Android and iOS Mobile Apps.

App & Outlet Connection established by authentication method.

Outlet is controlled using mobile app commands over BLE.

PRODUCT DIMENSION

LxWxH: 95x123x210mm (Approx.)

AUTO RE-START

Auto restart the EV Socket function when power resumes from OFF. Last session will be restored.

CYBER SECURITY

All the communications between Outlet & Apps and local data is secured using encryption methods.